

Beta vulgaris L. (Chenopodiaceae)

Clusters: may contain 2-6 seeds.

General shape: rounded or angular

Normal size: 5-7 mm L x 5-7 mm W x 5-7 mm D

Color: light brown.

Texture: smooth.

Distinguishing features: the individual achenes are closely attached and surrounded by the wavy bracts. Often the stem (stalk) is still attached to the cluster.

Achene

General shape: rounded or angular

Normal size: 1.5–3.0 mm L x 1.5–3.0 mm L x 1.0-2.0 mm D

Color: brown or grey.

Texture: smooth.

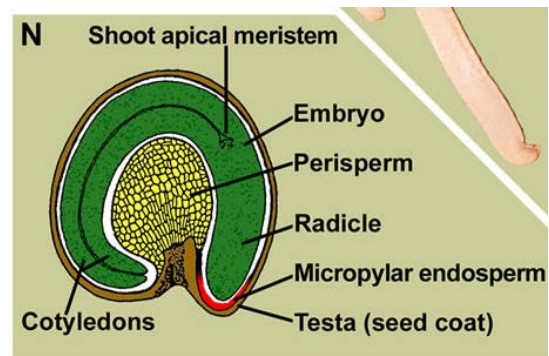
Distinguishing features: 3-5 radial ridges go from the centre of the visible top of the achene, which containing a comma-shaped seed, surrounded by a corky mass.

Embryo: annular, peripheral, coiled around the perisperm.



Seeds of *Beta vulgaris*

Images by SNES-GEVES



Cross section of seed showing embryo and nutritive tissue

Hermann et al. (2007) © Journal of Experimental Botany, Oxford Univ. Press, [http://jxb.oxfordjournals.org/Beta vulgaris](http://jxb.oxfordjournals.org/Beta_vulgaris): Sugar beet fruit and seed – The seed biology place – <http://www.seedbiology.de>