



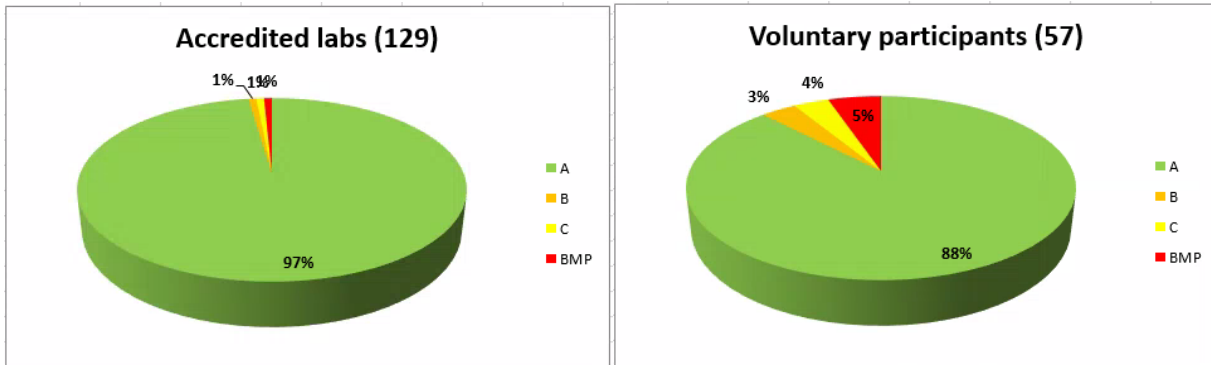
Summary results: PT 21-3 F.esc

Species: *Fagopyrum esculentum*

Scope: PUR, OSD, GER, TSW

PURITY Ratings

Total number of participants = 186



Means and Standard Deviation

of the obligatory accredited participants
calculated for the category of pure seed

Categories	Mean Values %			Standard Deviation		
	Lot 1	Lot 2	Lot3	Lot 1	Lot 2	Lot 3
Pure seed	99.2	99.5	99.7	0.18	0.14	0.11
Other seed	0.2	0.4	0.2	-	-	-
Inert matter	0.6	0.1	0.1	-	-	-



INTERNATIONAL SEED TESTING ASSOCIATION (ISTA)

Secretariat, Zürichstrasse 50, 8303 Bassersdorf, CH-Switzerland

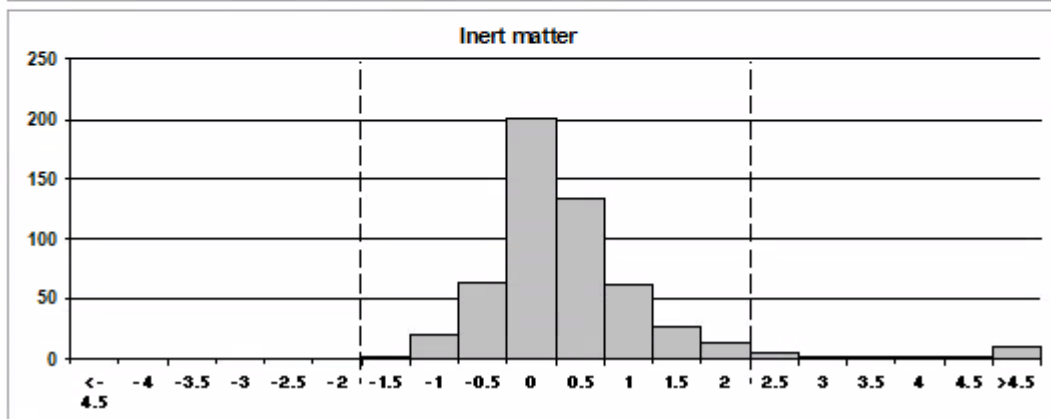
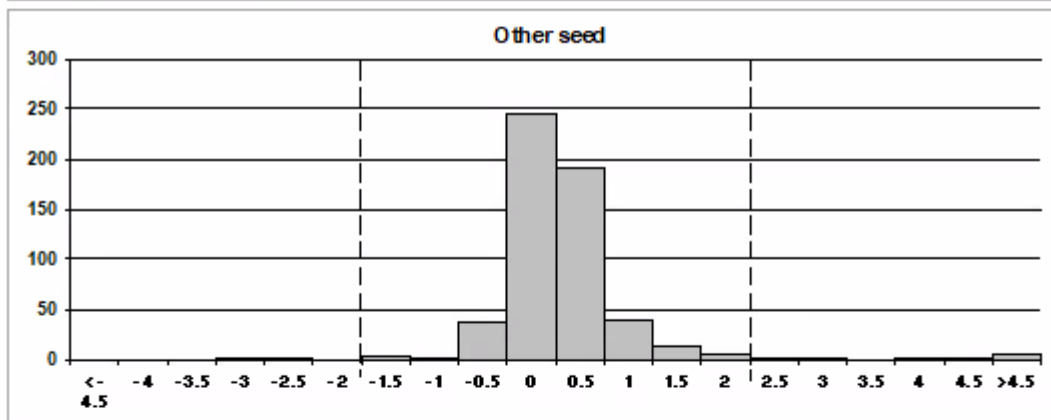
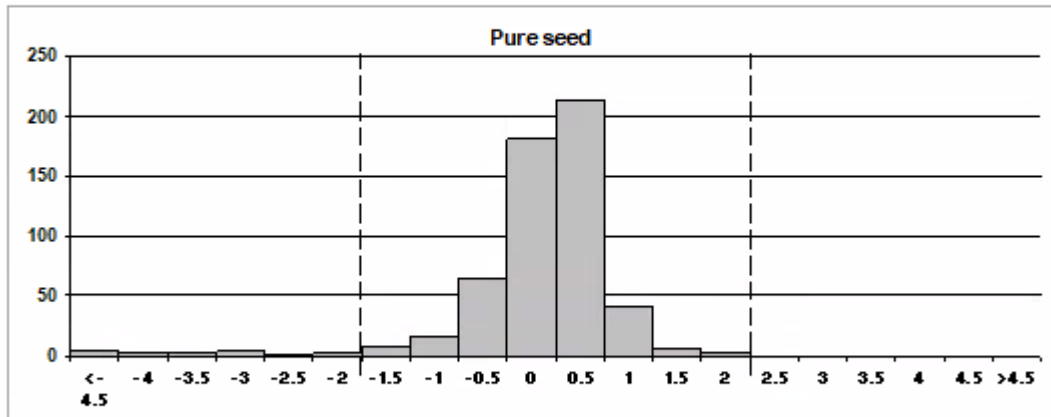
Phone: +41-44-838 60 00, Fax: +41-44-838 60 01, Email: ista.office@ista.ch, <http://www.seedtest.org>

Z-score Distribution

Species : *Fagopyrum esculentum*

Scope: Purity

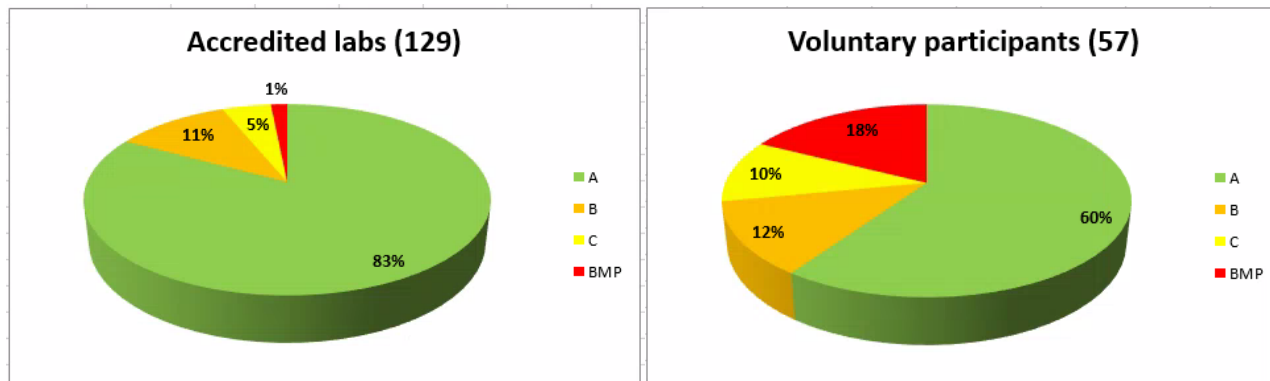
The following histograms show the frequency distributions of all participants Z-Scores for the relevant components, i.e. **Pure seed** and **Inert matter** and **Other seed**. The Z-Scores from all three samples are included in each histogram. For further explanations, please refer to the document 'The ISTA Proficiency Test Programme'





OSD Ratings

Total number of participants = 186



Retrieval rates

Species: *Fagopyrum esculentum*

Scope: Other Seed Determination

Average of seeds retrieved and identified correctly

The following table shows the retrieval rates of each species added by the test leader prior to sample dispatch. Every species that was added is assigned a value based on the actual retrieval rate of all seeds added. Thresholds are as follows:

- >=90 % -> 3
- >=85 % -> 2
- <85 % -> 1

This score is multiplied with the number of seeds your laboratory reported and identified correctly. The percentage of retrieved and identified seeds is then determined and does define the in-round rating. The thresholds are as follows:

- >=90 % -> A
- >=80 % -> B
- >=70 % -> C
- <70 % -> BMP

For further details please refer to the document: "The ISTA Proficiency Test Programme".

Lot #	Species name	# of seeds added	Average # of seeds found	Retrieval rate [%]	Assigned factor
Lot 1					
	1 <i>Alcea rosea</i>	4	3.6	90.1	3
	2 <i>Anethum graveolens</i>	4	3.5	88.5	2
	3 <i>Onopordum acanthium</i>	3	2.6	86.4	2
	4 <i>Raphanus sativus</i>	4	3.7	91.8	3
	5 <i>Solanum lycopersicum</i>	3	2.4	80.8	1
Lot 2					
	1 <i>Abelmoschus esculentus</i>	2	1.7	86.7	2
	2 <i>Dactylis glomerata</i>	4	3.3	83.3	1
	3 <i>Rudbeckia hirta</i>	4	3.3	82.5	1
	4 <i>Saponaria officinalis</i>	4	3.4	84.9	1
	5 <i>Tetragonia tetragonoides</i>	2	1.7	86.0	2
Lot 3					
	1 <i>Abutilon theophrasti</i>	3	2.7	90.3	3
	2 <i>Bromus hordeaceus</i>	2	1.8	91.8	3
	3 <i>Heracleum sphondylium</i>	2	1.5	76.0	1
	4 <i>Malva alcea</i>	3	2.3	75.0	1
	5 <i>Robinia pseudoacacia</i>	3	2.5	83.0	1



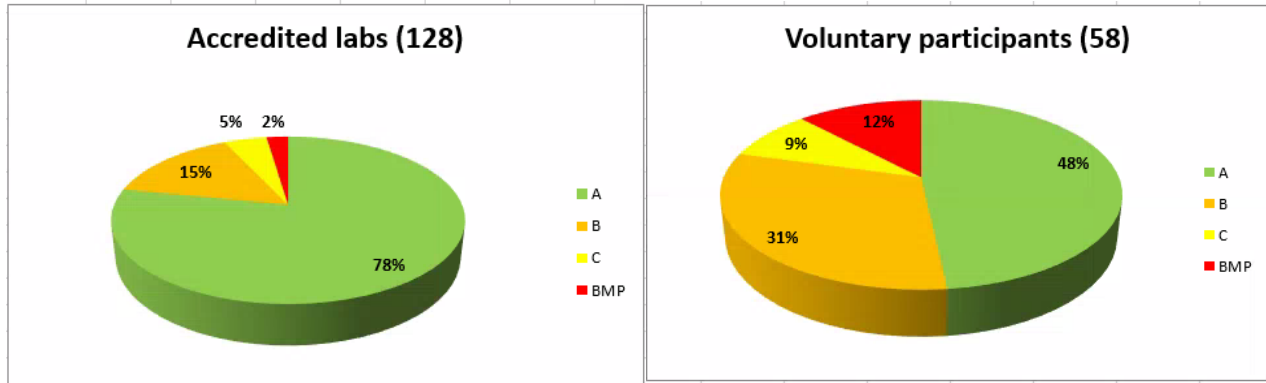
INTERNATIONAL SEED TESTING ASSOCIATION (ISTA)

Secretariat, Zürichstrasse 50, 8303 Bassersdorf, CH-Switzerland

Phone: +41-44-838 60 00, Fax: +41-44-838 60 01, Email: ista.office@ista.ch, <http://www.seedtest.org>

GERMINATION Ratings

Total number of participants = 186



Means and Standard Deviation

of the obligatory accredited participants
calculated for the category of normal seedlings

Categories	Mean Values %			Standard Deviation		
	Lot 1	Lot 2	Lot3	Lot 1	Lot 2	Lot 3
Normal seedlings	87	89	86	2.80	2.52	2.81
Abnormal seedlings	7	7	6	-	-	-
Non-germinated seed	6	4	8	-	-	-

Method used

overview for all participants
presented for the temperature, substrate and pretreatment

Temperature °C	# Users		# Users TOTAL
	Accredited labs	Voluntary participants	
20 ⇄ 30	83	37	120
20	43	21	64
25*	1		1
Not reported	1		1

* temperature not in accordance with the ISTA Rules



Substrate	# Users		# Users TOTAL
	Accredited labs	Voluntary participants	
BP	62	31	93
PP	38	7	45
TP	25	19	44
S		1	1
Not reported	3		3

Pretreatment	# Users		# Users TOTAL
	Accredited labs	Voluntary participants	
No Treatment	117	57	175
Prechill *	1		1
Light*	7		7
No light*	1		1
polyethylene envelope *	1		1
H₂O *		1	1

* pretreatment is not recommended by the ISTA Rules



INTERNATIONAL SEED TESTING ASSOCIATION (ISTA)

Secretariat, Zürichstrasse 50, 8303 Bassersdorf, CH-Switzerland

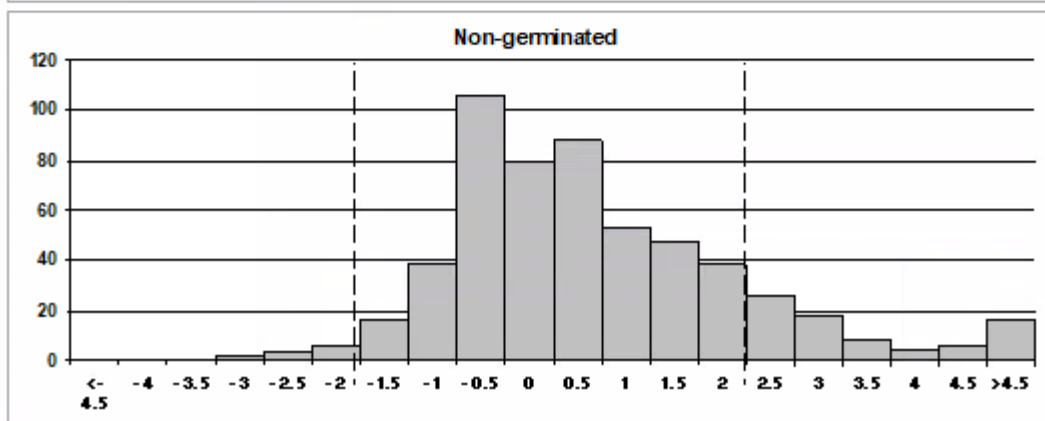
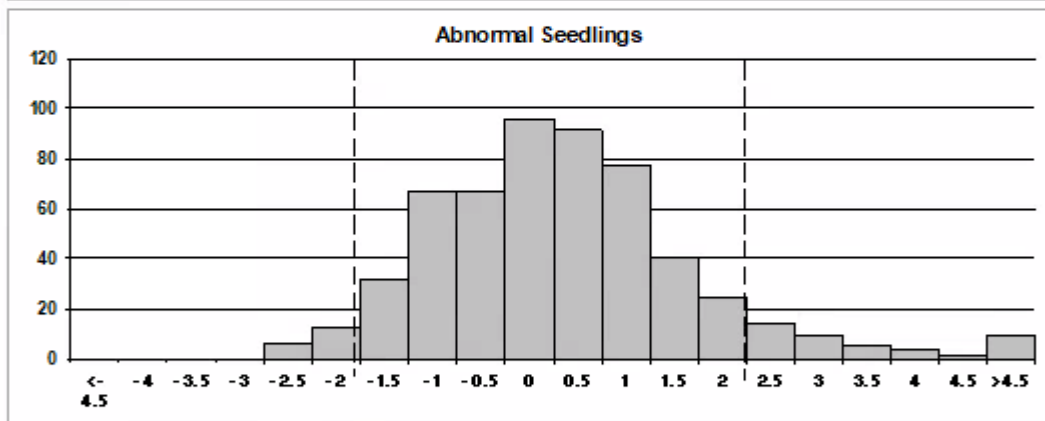
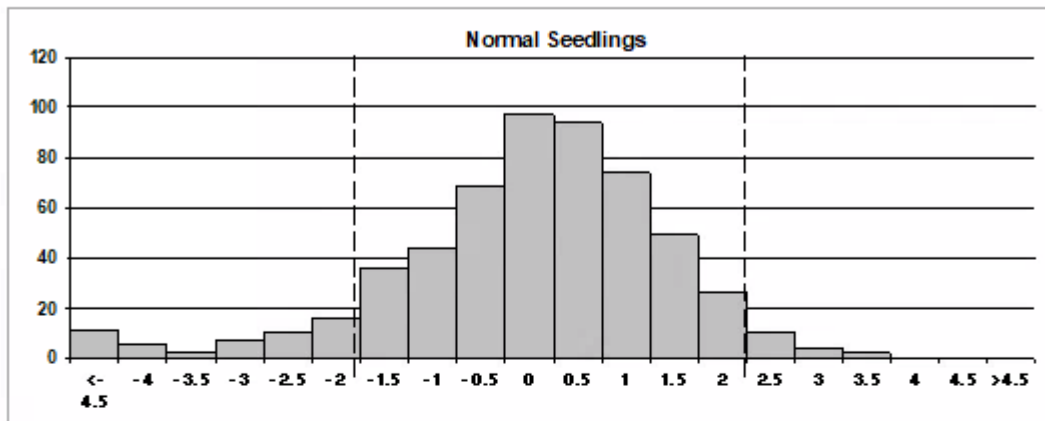
Phone: +41-44-838 60 00, Fax: +41-44-838 60 01, Email: ista.office@ista.ch, <http://www.seedtest.org>

Z-score Distribution

Species : *Fagopyrum esculentum*

Scope: Germination

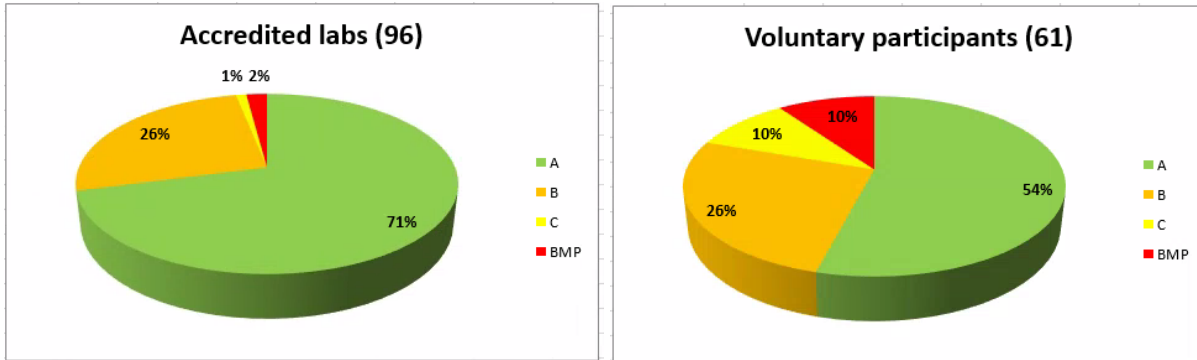
The following histograms show the frequency distributions of all participants Z-Scores for the relevant components, i.e. **Normal** and **Abnormal Seedlings** and **Non-germinated Seeds**. The Z-Scores from all three samples are included in each histogram. For further explanations, please refer to the document 'The ISTA Proficiency Test Programme'





THOUSAND SEED WEIGHT Ratings

Total number of participants = 157



Means and Standard Deviation

of the obligatory accredited participants

<u>Mean Values g</u>			<u>Standard Deviation</u>		
Lot 1	Lot 2	Lot3	Lot 1	Lot 2	Lot 3
23.64	23.33	24.05	0.37	0.40	0.44

Method used

overview for all participants

Method	# Users		# Users TOTAL
	Accredited labs	Voluntary participants	
Counting replicates	69	48	117
Count the whole pure seed fraction	27	13	40



INTERNATIONAL SEED TESTING ASSOCIATION (ISTA)

Secretariat, Zürichstrasse 50, 8303 Bassersdorf, CH-Switzerland

Phone: +41-44-838 60 00, Fax: +41-44-838 60 01, Email: ista.office@ista.ch, <http://www.seedtest.org>

Z-score Distribution

Species : Fagopyrum esculentum

Scope: Thousand seed weight

The following histogram shows the frequency distributions of all participants Z-Scores for the thousand seed weight test. The Z-Scores from all three samples are included in each histogram. For further explanations, please refer to the document 'The ISTA Proficiency Test Programme'.

