

Silene spp. (Caryophyllaceae)

Seed.

General shape : reniform or reniform-circular

Normal size: 0.8-2.3 mm L x 0.6-1.5 mm W x 0.3-1.0 mm D

Color: greenish to black

Texture: roughened by various types of conical tubercles

S. dioica: roughened by various types of tubercles

S. flos-cuculi: tubercles are in semicircles, metal grey

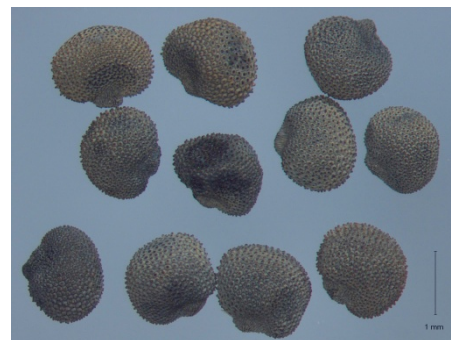
S. latifolia: tubercles are in concentric semi circles, grey

Distinguishing features: seed flattened, rounded and notched in the outline. The hilum is located in the notch. The lateral surface is flat or concave. The faces are concave or convex.

Embryo: peripheral around the endosperm



Seeds of *Silene* spp.



Silene dioica



Silene flos-cuculi



Silene latifolia

Images by SNES-GEVES