



ISTA
Seed Quality Assurance

ISTA Secretariat

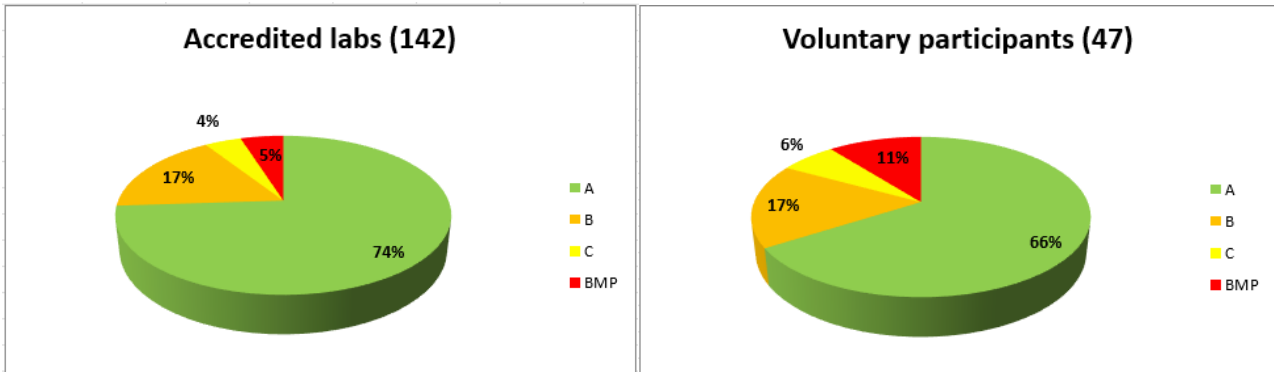
Richtiarkade 18, 8304 Wallisellen, Switzerland
Phone: +41 44 838 60 00 | Fax: +41 44 838 60 01
Email: ista.office@ista.ch
www.seedtest.org

Summary results: PT 25-3 C.qui

Species: *Chenopodium quinoa* Scope: GER

GERMINATION Ratings

Total number of participants = 189



Means and Standard Deviation

of the obligatory accredited participants
calculated for the category of normal seedlings

Categories	Mean Values %			Standard Deviation		
	Lot 1	Lot 2	Lot3	Lot 1	Lot 2	Lot 3
Normal seedlings	92	65	88	1.84	6.78	2.84
Abnormal seedlings	5	20	8	-	-	-
Non-germinated seed	3	15	4	-	-	-

Method used

overview for all participants.
presented for the temperature, substrate and pretreatment.

Temperature °C	# Users		# Users TOTAL
	Accredited labs	Voluntary participants	
20	142	45	187
20↔30*	0	2	2

*use of this temperature is not prescribed in the ISTA Rules

Substrate	# Users		# Users TOTAL
	Accredited labs	Voluntary participants	
TP	88	29	117
PP	33	6	39
BP	20	11	31
TPS*		1	1
Not stated	1		1

*use of this substrate is not prescribed in the ISTA Rules

Pretreatment	# Users		# Users TOTAL
	Accredited labs	Voluntary participants	
No Treatment	132	44	176
Prechill*	2	2	4
Light / H ₂ O	7	1	8
Not stated	1		1

*these pre-treatments are not suggested in the ISTA Rules

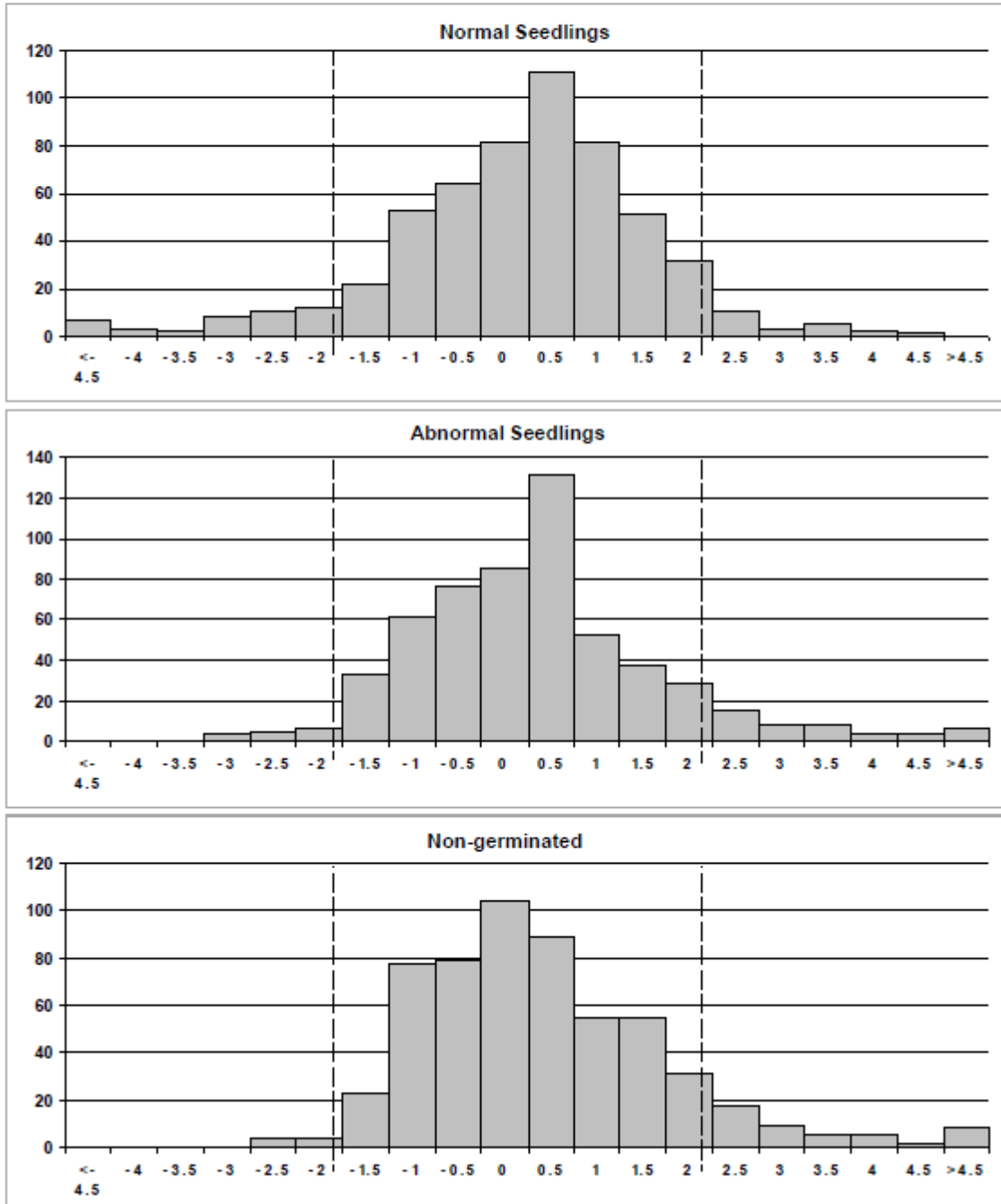
Z-score Distribution

Proficiency Test Report – Test Round 25-3 C.gui

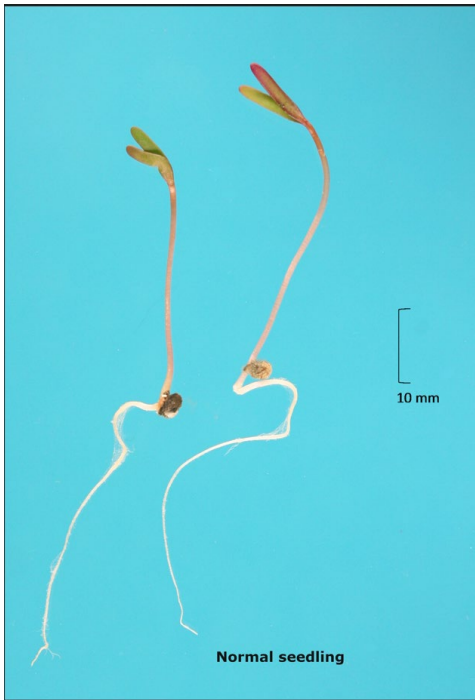
Species : Chenopodium quinoa

Scope: Germination

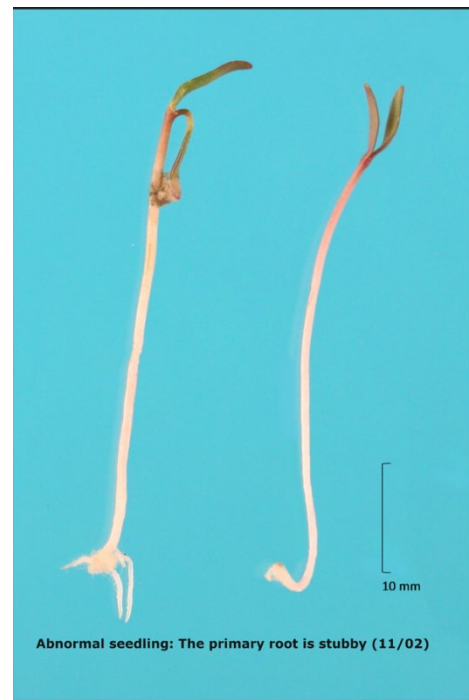
The following histograms show the frequency distributions of all participants Z-Scores for the relevant components, i.e. **Normal and Abnormal Seedlings** and **Non-germinated Seeds**. The Z-Scores from all three samples are included in each histogram. For further explanations, please refer to the document 'The ISTA Proficiency Test Programme'



NORMAL SEEDLINGS



ABNORMAL SEEDLINGS



ABNORMAL SEEDLINGS

