

*Dactyloctenium aegyptium* ( L.) Willd. (Poaceae)

**SPIKELET**

Containing 3 – 7 florets, disarticulation above the glumes (glumes remain attached to plant), florets usually falling in groups

**FLORET**

**General shape:** laterally compressed, ovate in outline, apex tapering to a point  
**Normal size:** 2.5 – 3.5 (4.0) mm long x 1.5 – 2.5 mm wide,

**Color:** straw colored, +/- greenish tinged

**Texture:** thin and papery, glabrous

**Distinguishing features:** lemma strongly keeled, mid-vein extended into a curved awn, 0.5 – 0.8 mm long; callus blunt; palea nearly as long as lemma, glabrous

**FRUIT**

A utricule with thin papery pericarp from which the true seed usually falls free.

**SEED**

**General shape:** laterally compressed, somewhat squared in outline

**Normal size:** ca. 1.0 mm long and wide

**Color :** light tan to reddish-brown

**Texture:** transversely rugose

**Embryo:** nearly as long as seed

**Endosperm:** solid

**Hilum:** a knob-like protrusion in the center of the flattened bottom of seed

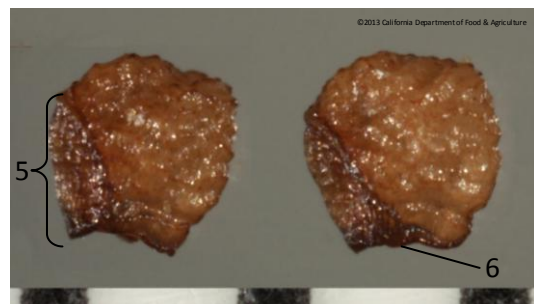
Description by Deborah Meyer  
 California Department of Food & Agriculture



*Dactyloctenium aegyptium* florets and seeds.



Lateral view of florets, basal floret fertile, distal floret sterile. Florets laterally compressed, lemma (1) with sharp keel (2), keel hairs short and stiff, awn (3) short, and callus blunt (4).



Laterally compressed true seeds that have fallen free of thin papery pericarp (fruit wall). Embryo (5) along edge of seed, nearly as long as seed. Hilum (6) a small knob-like protrusion in center of flattened bottom of seed.

Images by Jim Effenberger & Deborah Meyer