

# GMO Committee Activity Report 2025-26

Enrico Noli, Elena Perri, and René Mathis



# Scope

Plant biotechnology is playing an increasingly important role in agriculture worldwide. It has the potential to promote sustainable development by breeding healthier and more resilient crops.

The **Adventitious Presence** of GM seeds in non-GM seed lots, and the **Trait Purity** of GM seed lots are important aspects of seed quality.

# Vision

***ISTA labs are competence centers for uniform testing of GM seeds***

- Chapter 19 Testing for seeds of GMO
- Proficiency Tests on GMO for the Accreditation Programme
- Platform for the exchange of information

# Performance Based Approach (PBA)

*Targeting uniformity in testing results rather than in methodology*

- **There are not ‘prescribed’ methods for GMO in the ISTA Rules.** A lab can choose:
  - the testing technology (bioassay, ELISA, LFSs, end-point-, real-time-, and digital-PCR, etc.)
  - the assay (specific target)
  - the testing approach
  - the working sample size
  - the testing plan
  - the unit and the way of expressing results
- **Methods must be validated/verified** (satisfy acceptance criteria).

## Key items

- Performance Data Evaluation of methods produced from seed samples
- Proficiency Test conducted on seed samples
- On-site assessment (audit)

# Performance Based Approach (PBA)

- The ISTA systems for GMOs is robust and can accommodate the various testing approaches and technologies currently used for the different testing objectives.
- In principle, this system can also be applied to testing seeds obtained by new genetic techniques (NGTs).
- The STA Committee has developed tools for designing testing plans, analysing data, and obtaining estimates and their associated uncertainties.
- The framework provided by ISTA, when properly applied, enables labs to report reliable results regarding GMO, as well as other aspects of seed quality.

# ISTA Labs Accredited for GMO Testing



## ■ 12 laboratories

- 12 accredited for Adventitious Presence
- 1 also for Trait Purity

## ■ 5 species

- canola, corn, cotton, soybean, sugarbeet

## ■ 4 Technologies

- bioassay, LFS, rtPCR, epPCR

## ■ Estimation of level

- by both quantitative assays and group testing

# Membership

Chair: Enrico Noli (IT)

Vice-Chairs: René Mathis (FR) and Elena Perri (IT)

1. Laura Bowden (UK)
2. Florence Goubet (BE)
3. Andrea Jonitz (DE)
4. Beni Kaufman (USA)
5. Jean-Louis Laffont (FR)

6. Benoit Maes (BE)
7. Dwarkesh Parihar (IN)
8. Kirk Remund (USA)
9. Ana Laura Vicario (AR)
10. Bruno Zaccomer (FR)

ECOM Liaison officers: Vanessa Sosa, Keshavulu Kunusoth

# Activity organization and task sharing

#	Position	Name	Country	ISTA Rules (Ch.19)	Publications		List Standardized Terms	Workshops & Seminars	ISTA GMO Website	Proficiency Tests			Special Projects					
					HandBook	On GMO Tcom activity				Expert Group	Seed procurement	Collaboration with SCST	Statistical tools	ATC Contact	Revision of PDE for TP	Reporting on ISTA certifi.	Non-GM assays for PDE	Genome Edited crops
1	Chair	Enrico Noli	ITA	L	L		TL	TL	TL	L			M		M	M	L	M
2	Vice-Chair	René Mathis	FRA	M	L		M								M			M
3	Vice-Chair	Elena Perri	ITA	M	M		M								M	L		
4	Member	Ana Laura Vicario	ARG	M	M		M						L					M
5	Member	Andrea Jonitz	DEU	M			M											
6	Member	Bruno Zaccomer	FRA	M	M		M	M	M		M				M	L		
7	Member	Dwarkesh Parihar	IND	M														
8	Member	Jean-Louis Laffont	FRA	M	M			M	M	M			L		M			
9	Member	Kirk Remund	USA	M	M			M	M				M		M			
10	Member	Florence Goubet	BEL	M	M										M			
11	Member	Laura Bowden	GBR	M	M		M											
12	Member	Benoit Maes	BEL	M							L							
13	Member	Beni Kaufman	USA	M	M		M										M	
14	Member																	
15	Member																	
1	WG member	Alessandra Barbante	IT		M													
2	WG member	Daniela Villa	IT		M													
3	WG member	Melissa Phillips	USA		M													
4	WG member	Sarah Foster	CAN		M													
5	WG member	Marie-Claude Gagnon	CAN		M													
	Ecom liaison	Vanessa Sosa	URY															
	Ecom liaison	Keshavulu Kunusoth	IND															
	TC Manager	Nadine Ettel	CHE								L							
	WG Member	Christoph Haldemann	CHE		M		M				M							
	WG Member	Cheryl Dollard	CAN				M				M							

- ISTA Rules
- Handbook on GMO Testing
- List of standardised terms
- Revision of PDE documents
- Proficiency tests
- Reporting on ISTA Certificates

TL = Temporary Leader

# ISTA Rules

- No proposals for Rules amendments presented this year for Chapter 19
- Rules proposals for Annual Meeting 2027 are in preparation to be discussed in the closed meeting

## Topics covered:

- Need for more clear definition regarding obligatory participation of GMO-accredited labs to ISTA PTs on GMO
- Add a definition of “Testing plan” in Rule 19.2 Definitions
- Further improve clarity in Rules 19.7 Reporting results
- Harmonize the description of “Testing plan” in 19.7.1, 19.7.2, and 19.7.3

# Handbook on GMO testing

- Section 1 - Introduction *advanced draft*
- Section 2 - Generalities *advanced draft*
- Section 3 - Introduction to GMO testing *advanced draft*
- Section 4 - Sample preparation *draft*
- Section 5 - Testing technologies *draft*
- Section 6 - Statistical approaches *finalised*
- Section 7 - ISTA accreditation for GMO testing *advanced draft*
- Section 8 - Best practices FAQ *early draft*

- 8 Sections – 1 finalised, 4 advanced draft, 2 draft, 1 early draft
- “New” technologies still need to be included (digital PCR, NGS, etc.)
- External experts contributing on some topics (as working group members)

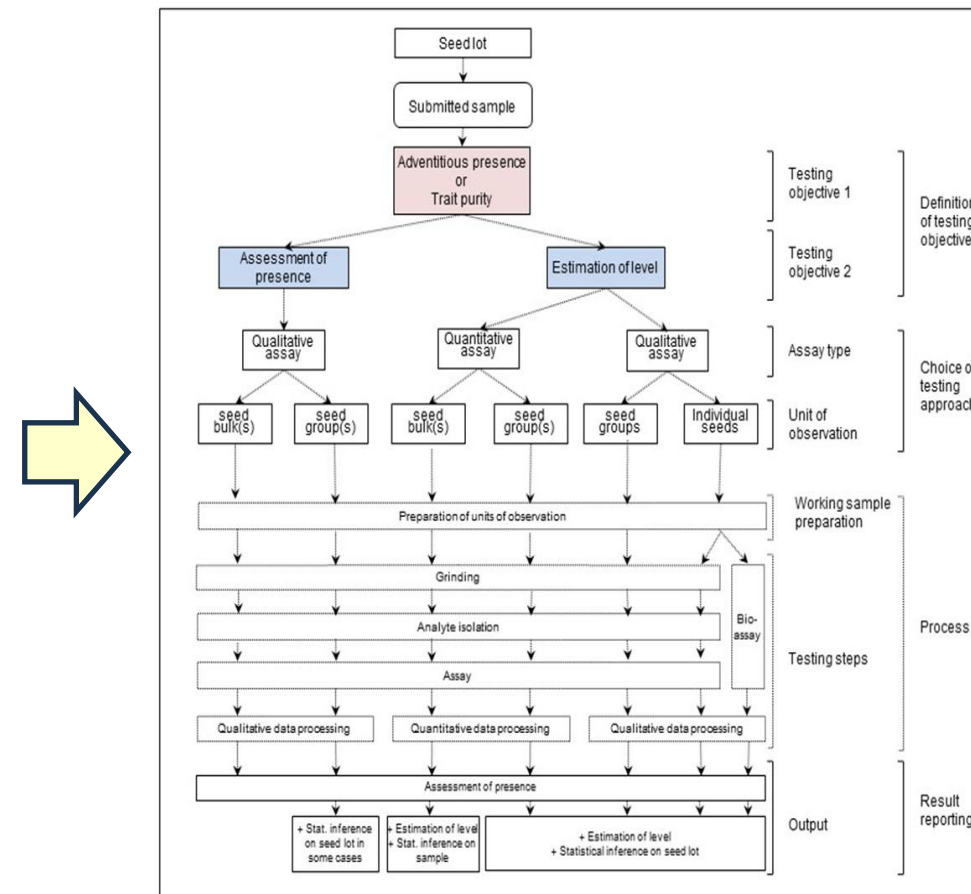
# List of Standardised Terms

General

Species  
Objective 1  
Objective 2  
Technologies  
Assay type  
Unit of observation

Assay targets

Traits  
Proteins  
Coding Sequences  
Promoters  
Terminators  
Constructs  
Events (UID/EN)  
Enhancers  
Introns  
Leaders  
Regulatories  
Transit peptides  
Vector fragments



## PROMOTE UNIFORMITY

- Clear “Scope of accreditation” on website
- Guide Auditors in assessing labs
- Uniformity in reporting GMO results

Implementation in Chapter 19 since 2023

### General syntax for a genetic element:

prefix      name      donor organism

XX-XXXX-XXXXX

CS-cry1Ab-BACTU

Examples: P-35S-CaMV

T-pinII-SOLTU

In 2020 we decided to adopt for genetic elements the nomenclature system used by the **Biosafety Clearing House** and the **EUGINIUS DB**

- new events on the market, new terms => needs continuous updating

# List of Standardised Terms

For labs testing GMO, the display of the scope of accreditation on the ISTA website was recently improved.

## Lab1

GMO: Glycine max, Adventitious Presence, Assessment of presence and Estimation of level, rtPCR, Qualitative, Seed bulk(s) or groups(s), MON-877Ø1-2

GMO: Glycine max, Adventitious Presence, Assessment of presence and Estimation of level, rtPCR, Qualitative, Seed bulk(s) or groups(s), MON-877Ø8-9

GMO: Glycine max, Adventitious Presence, Assessment of presence and Estimation of level, rtPCR, Qualitative, Seed bulk(s) or groups(s), MON-89788-1

GMO: Zea mays, Adventitious Presence, Assessment of presence and Estimation of level, rtPCR, Qualitative, Seed bulk(s) or groups(s), MON-89Ø34-3

GMO: Zea mays, Adventitious Presence, Assessment of presence , rtPCR, Qualitative, Seed bulk(s) or groups(s), MON-ØØ6Ø3-6

GMO: Zea mays, Adventitious Presence, Assessment of presence and Estimation of level, rtPCR, Qualitative, Seed bulk(s) or groups(s), SYN-IR162-4

Species Objective 1 Objective 2 Technology Type of assay Unit of observation Assay target

## Lab2

GMO: Glycine max, Adventitious Presence, Assessment of presence , rtPCR, Qualitative, Seed bulk(s) or groups(s), E-FMV

GMO: Glycine max, Adventitious Presence, Assessment of presence , rtPCR, Qualitative, Seed bulk(s) or groups(s), P-35S-CaMV

GMO: Glycine max, Adventitious Presence, Assessment of presence , rtPCR, Qualitative, Seed bulk(s) or groups(s), T-nos-RHIRD

GMO: Zea mays, Adventitious Presence, Assessment of presence , rtPCR, Qualitative, Seed bulk(s) or groups(s), P-35S-CaMV

GMO: Zea mays, Adventitious Presence, Assessment of presence , rtPCR, Qualitative, Seed bulk(s) or groups(s), T-nos-RHIRD

GMO: Zea mays, Trait Purity, Assessment of presence, Bioassay, Qualitative, Individual seeds , Herbicide tolerance: glufosinate

GMO: Zea mays, Trait Purity, Assessment of presence, Bioassay, Qualitative, Individual seeds , Herbicide tolerance: glyphosate

GMO: Zea mays, Trait Purity, Assessment of presence, ELISA, Qualitative, Individual seeds, Cry2Ab2

Species Objective 1 Objective 2 Technology Type of assay Unit of observation Assay target

# Review of Performance Data Evaluation (PDE) docs for AP and TP

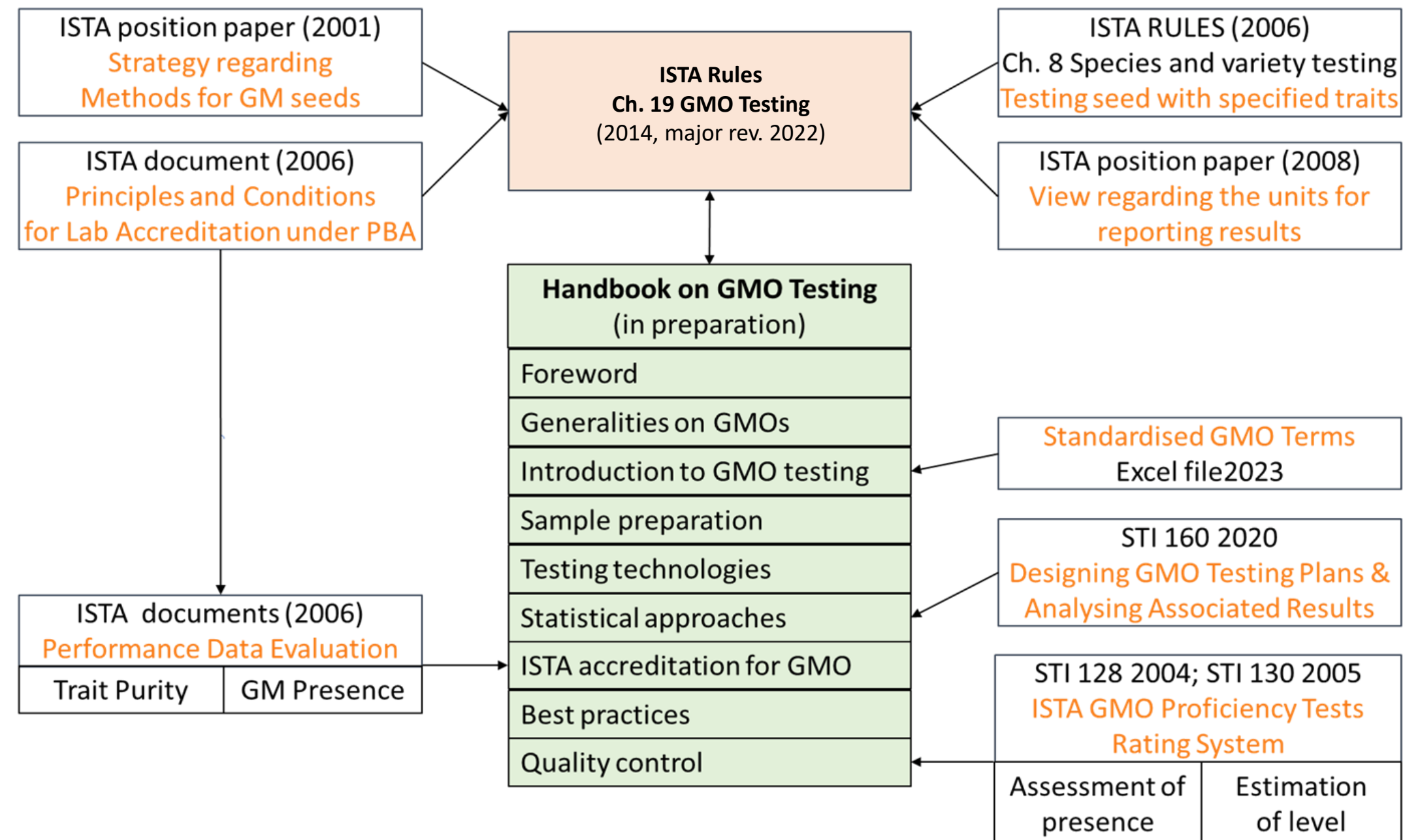
## • PDE for AP

thoroughly reviewed and discussed (version 2) by the Committee in 2024 (after Verona). A new layout (version 3) according to the format of the Accreditation Dept. is here proposed for final approval.

## • PDE for TP

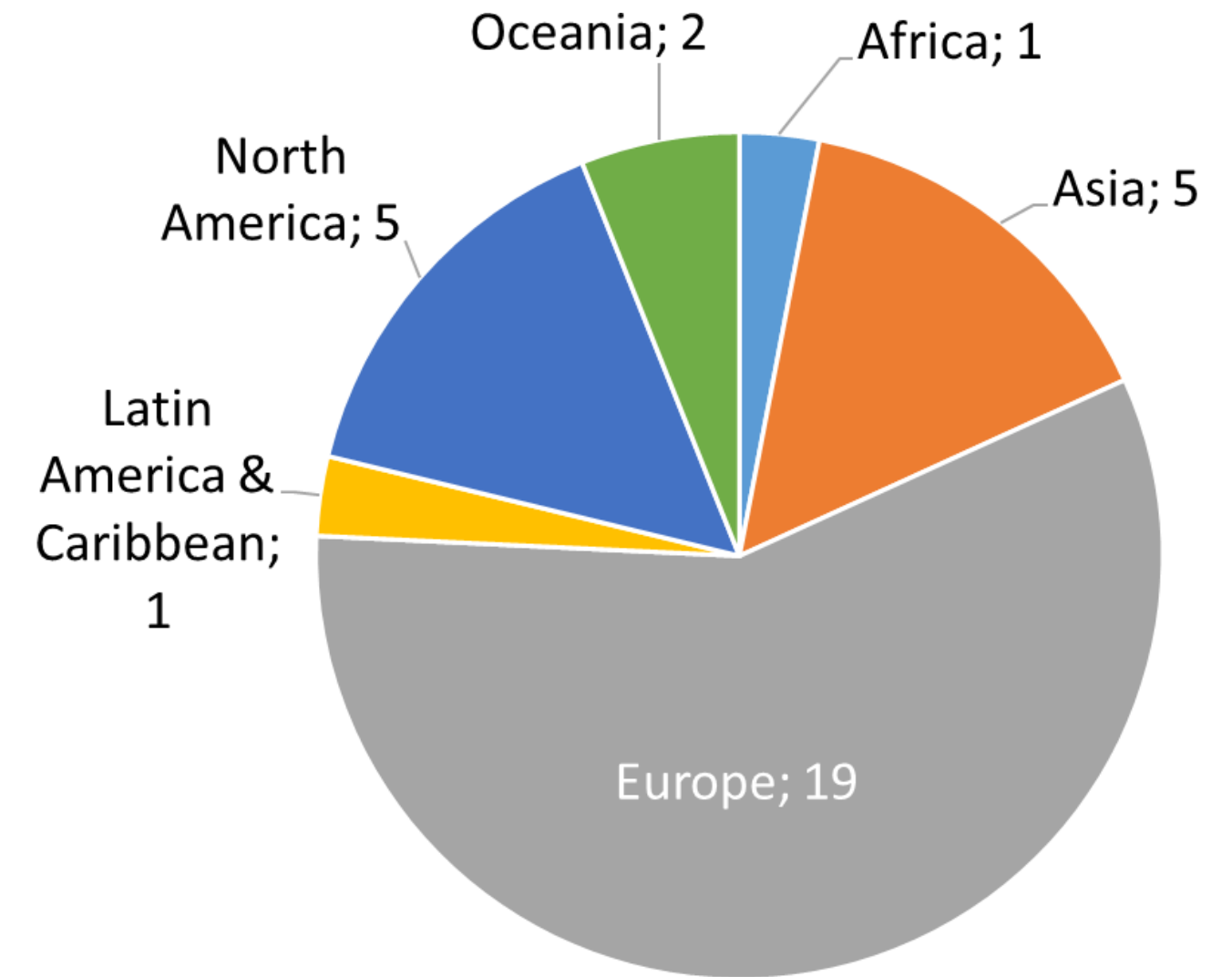
A draft revision is proposed, aimed at aligning it to current Chapter 19 and to PDE for AP.

## ISTA Documents on GMO testing



# Proficiency tests - PT24

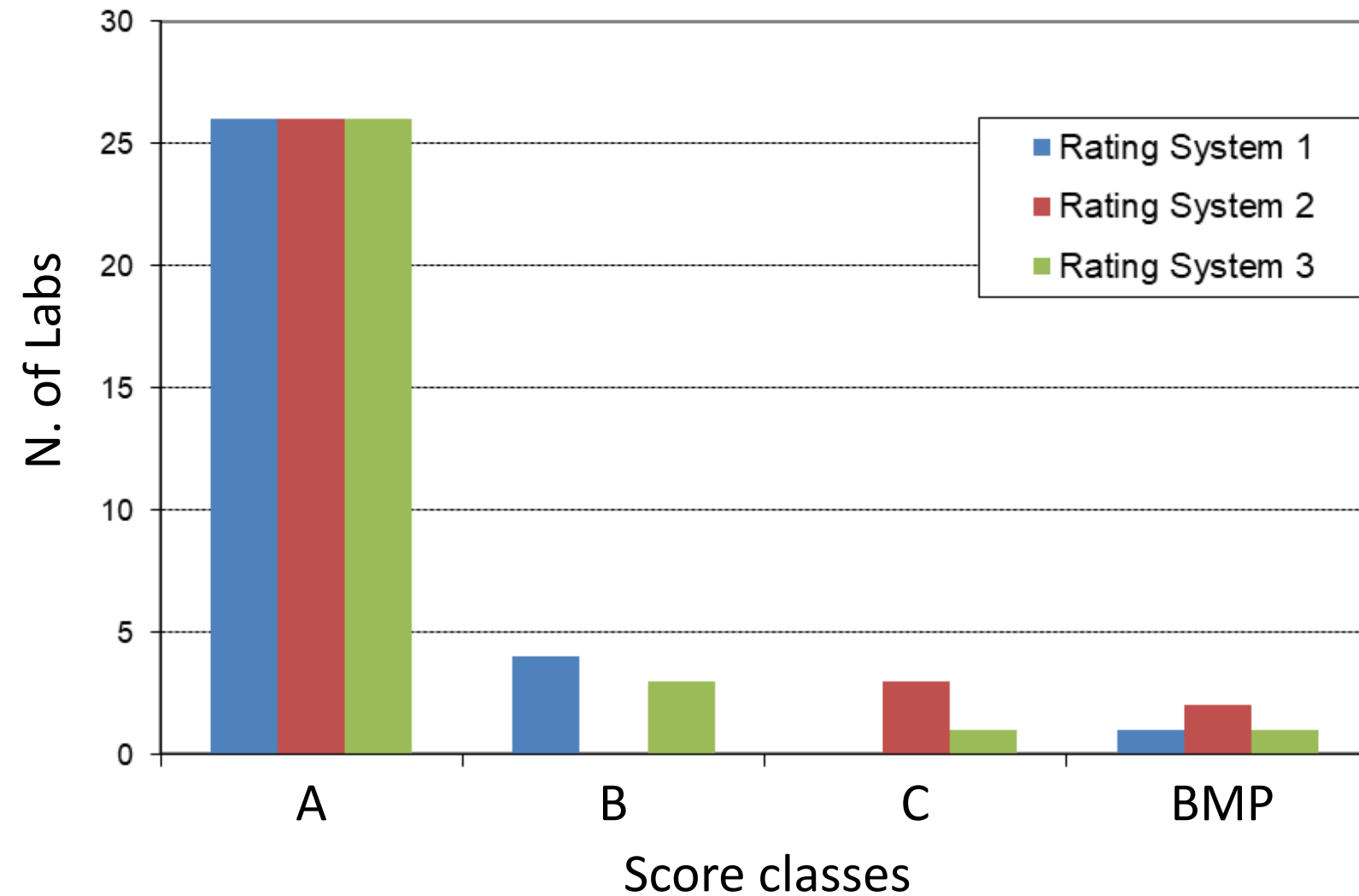
- *Zea mays*
- T25 (ACS-ZMØØ3-2) from BASF
- 8 samples of 1500 seeds
- 3 GM levels 0%; 0.26% 0.53%; 0.93%
- Samples prepared and distributed by Intertek (SWE)
- 33 participant labs, 31 submitted their results
  - 7 labs for assessment of presence only
  - 24 labs for assessment of presence and estimation of level
- 9 labs participated to the OIC-filling exercise



Thanks to Benoit Maes, Pernilla Andersson, Nadine Ettel

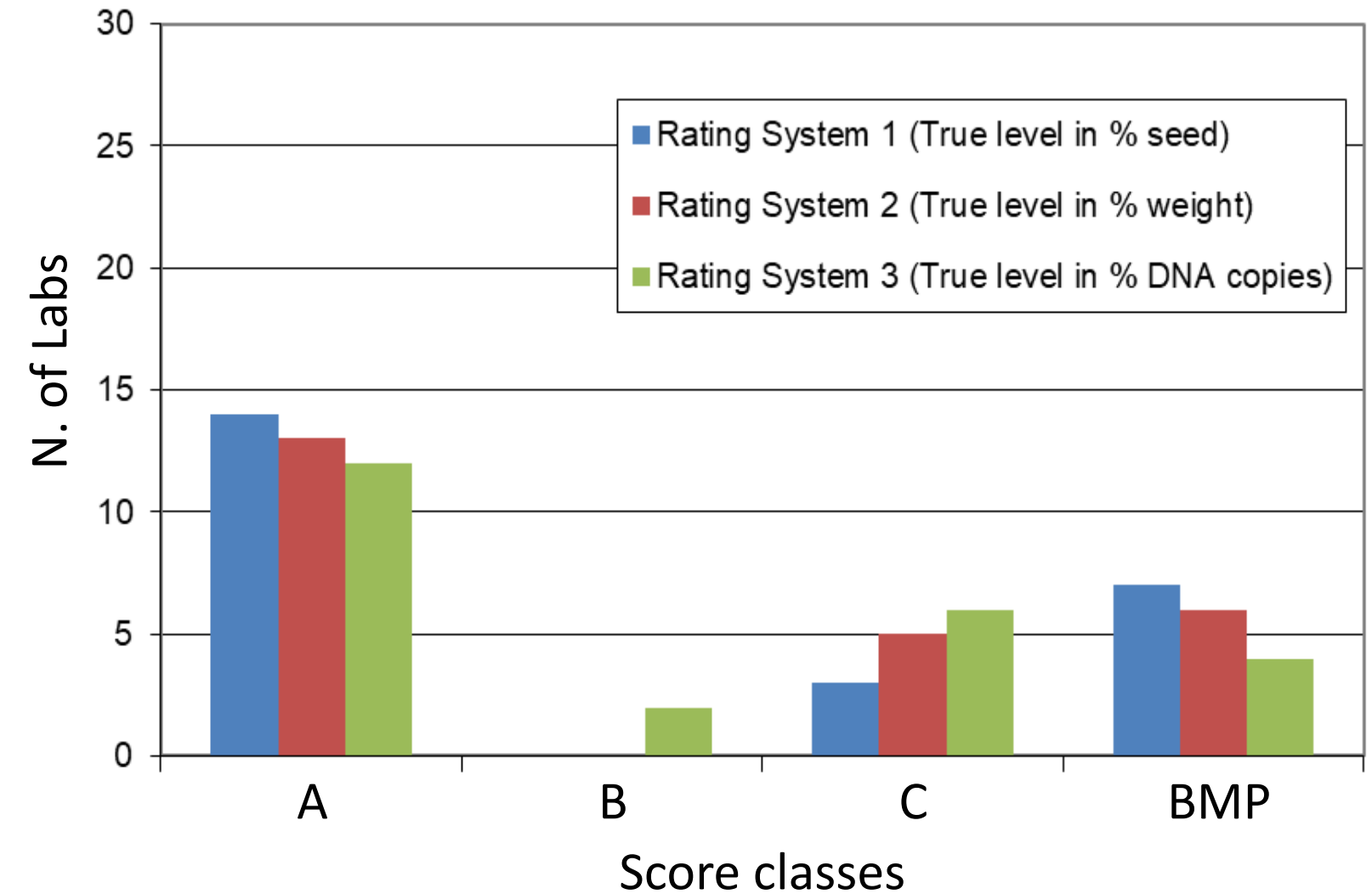
# PT24 results

Comparison of qualitative rating systems for PT24  
(assessment of presence)



Rating system 2 adopted

Comparison of quantitative systems for PT24  
(estimation of level)

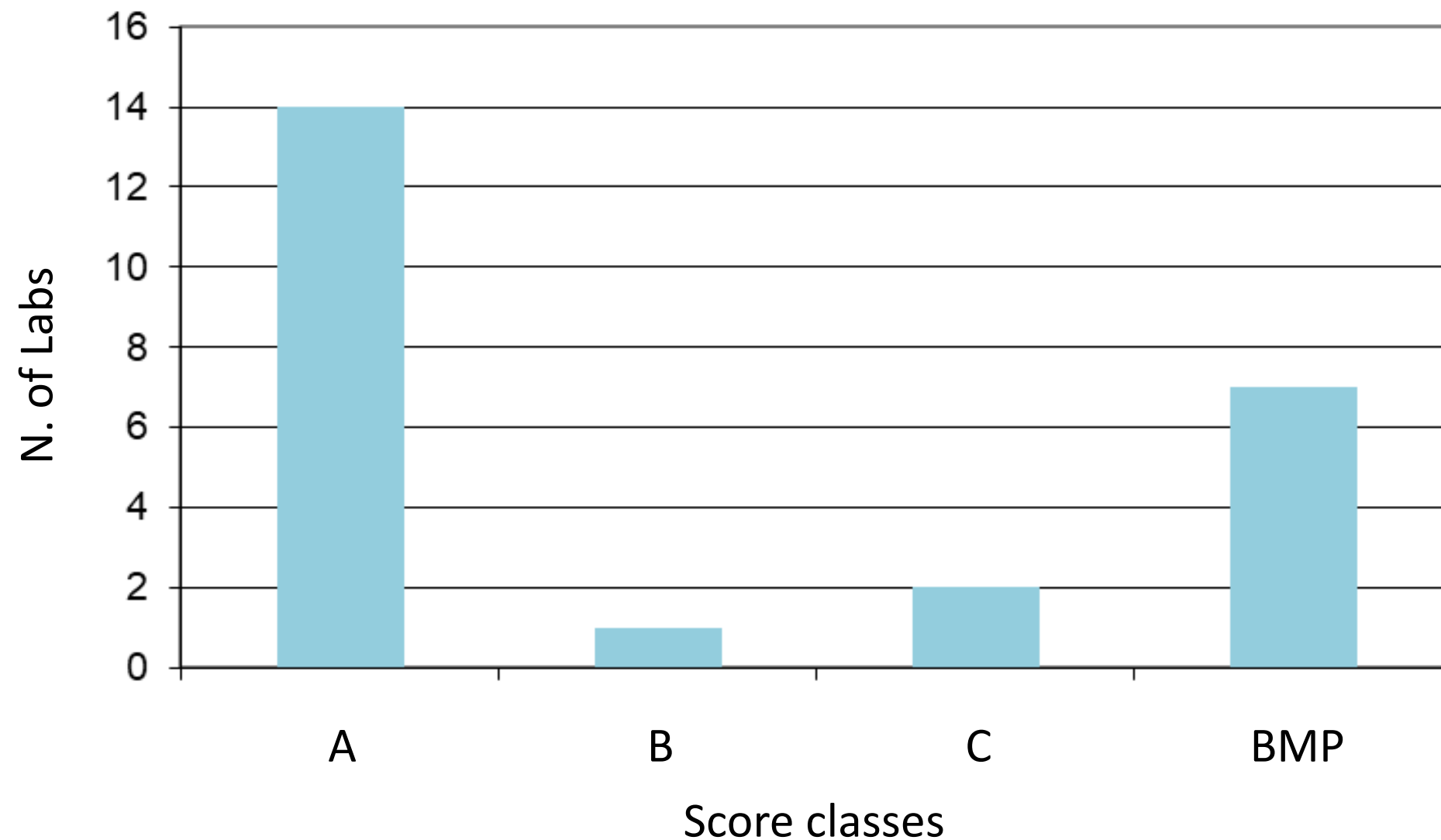


Labs rated according to % unit reported

Rating performed by expert team: Jean-Louis Laffint, Christoph Haldeman, Nadine Ettel, Enrico Noli

# PT24 results

Final rating of 24 Labs for estimation of level in PT24  
Rating according to the % unit reported by each Lab



- Twenty-six of 31 (84%) of the labs reporting the assessment of presence of GM got a positive score (A or B)
- Only 15 of 24 (63%) of the labs reporting estimates of GM level got a positive score (A or B)
- Low scores were more frequent among labs reporting by % weight and, to some extent, by % copy, due to overestimation

# PT24 results

## Possible explanations

- The “guilty culprit” could be the **reference material** used by the labs to obtain their estimates
  - The **GM seeds** (T25) that were spiked in **were homozygous**
  - **Reference materials** that are **homozygous** or **hemizygous** for the event are available
  - If no correction factor is applied, **labs using hemizygous reference material would overestimate**
  - Information from some of the labs supports this hypothesis

## Take home

- **The zygosity of the GM seeds should be stated in the Technical Protocol** accompanying the samples. This would enable the lab to use the relevant reference material or apply the appropriate conversion factor (biological factor in SeedCalc8).
- In general, to better understand potential issues and be able **to provide suggestions to participant labs** (if they required them), **we should encourage them to share information** on key technical aspects of their analysis ( such as the test targets and the reference materials used)

# PT24 – OIC-filling exercise

## Objectives

- To evaluate the competence of labs in reporting GMO testing results on ISTA certificates according to the instructions provided in Chapter 19
- To obtain feedback helping to identify possible improvements to the Rules

## Participation

- Restricted to ISTA labs, voluntary
- 9 labs, of which 7 accredited for GMO testing

## Structure

As for standard PTs, the exercise included

- a general part (“Stated by the applicant” and “Information”)
- a technical part (description of analysis and results)

# PT24 – OIC-filling exercise

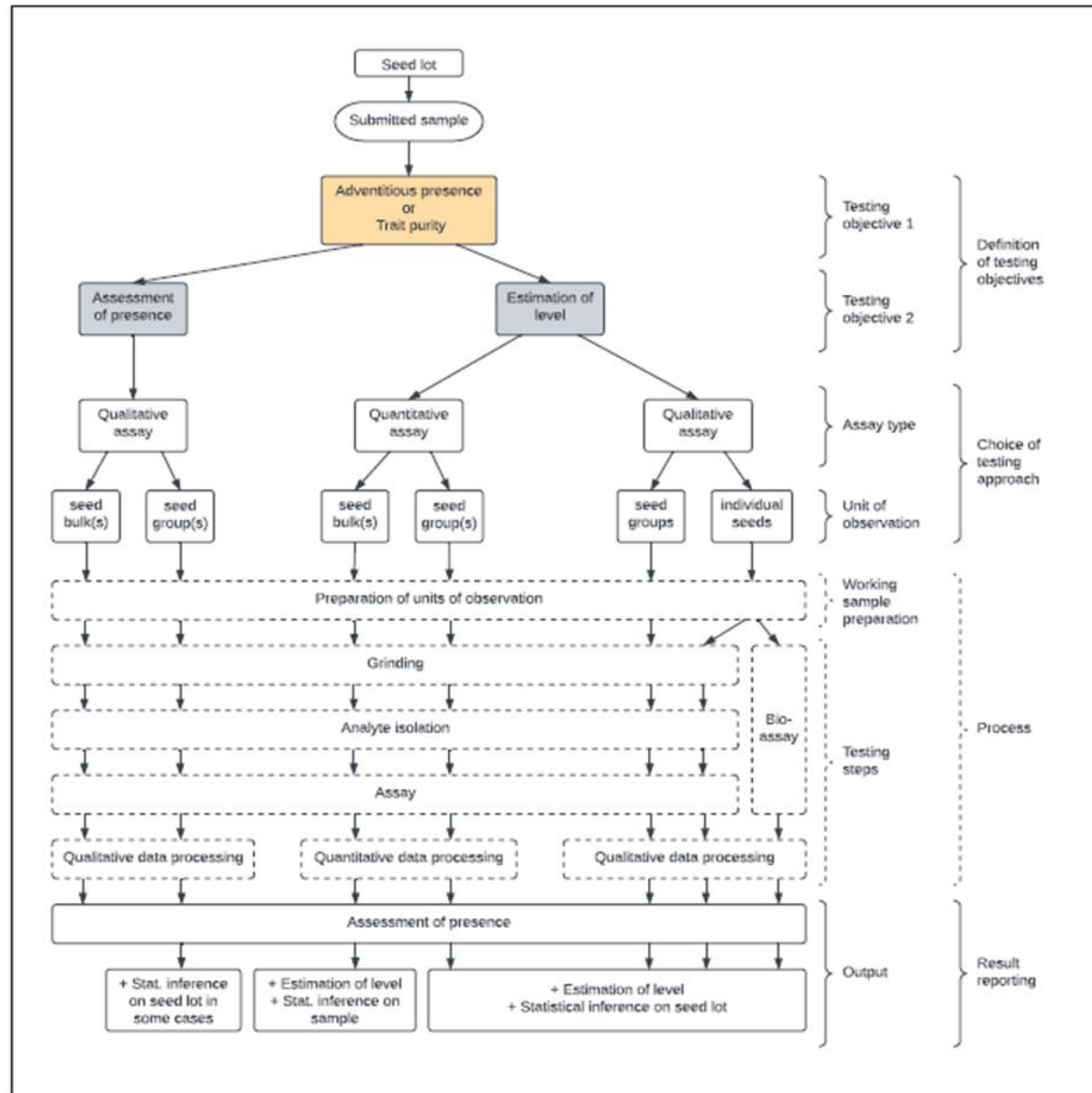
## 19.7 Reporting results

### Description of analysis

[...] The result of a GMO test must be reported under ‘Other determinations’ as follows:

- the request of the applicant (testing objectives);
- the testing approach
- the testing technology
- the assay target
- a description of the working sample (e.g. pure seed fraction, inert matter present, other seeds present, washed seed);
- the number of seeds in the working sample (for OIC) or alternatively, the weight of the working sample (for BIC);
- a description and the source of the reference material used (e.g. certified reference material, provider);
- the limit of detection of the method [...];
- the limit of quantification of the method [...].

For the items indicated above, the terms to be used on an ISTA Certificate should be those reported in the *List of Standardised Terms*



# PT24 – OIC-filling exercise

*Reporting results (according to objective and approach)*

## 19.7.1 Assessment of presence of GMO

- “The test target was/was not detected”
- A negative result obtained with a qualitative assay, even on a single group, can allow declaration that “The seed lot meets the specification of ...% (max. or min.) with ...% confidence”.

## 19.7.2 Estimation of level of GMO by multiple qualitative tests of individuals or groups

- The total number of seeds tested, the number of groups, and the number of seeds per group must be reported
- “The percentage of seeds with test target was determined to be ...% with 95% confidence interval of [...%, ...%]”

## 19.7.3 Quantitative measurements in bulk samples

- The number of groups or bulks, the number of replicate flour samples per group/bulk, and the number of replicate measurements per flour sample must be indicated
- ‘The test target percentage in the seed sample (in case of bulks)/in the seed lot (in case of groups) was determined to be ...% by mass or number of copies, with a 95 % confidence interval of [...%, ...%]’

## For both 19.7.2 and 19.7.3

- “For the test target(s) specified by the applicant, the seed lot meets the specification of ....% (max. or min. with ....% confidence

# PT24 – OIC-filling exercise

OTHER DETERMINATIONS – ANDRES DETERMINATIONS – WEITERE ÜBERPRÜFUNGEN SIEHE ÜBERPRÜFUNGSBERICHT

GMO Test: analysis requested: GMO presence and quantification maize; Assay targets: P-35S-CaMV (Screening), T-nos (Screening), V-FlankingTi-ocs-RHIRD (Screening), bar (Screening), CTP2-CP4EPSPS (Screening), pat (Screening), ACS-ZM003-2 (event specific method).

Analysis result: P-35S-CaMV detected (LOD=0.02% determined with ERM®BF-427d), T-nos not detected (LOD=0.02% determined with pENGL-00-01\_07-01), V-FlankingTi-ocs-RHIRD not detected (LOD=0.01% determined with AOCS 0210-A), bar not detected (LOD=0.02% determined with AOCS 0306-F), CTP2-CP4EPSPS not detected (LOD=0.02% determined with AOCS 0304-B), pat detected (LOD=0.02% determined with AOCS 0707-C2), ACS-ZM003-2 detected (LOD=0.02% determined on validation data);

Quantification: 0.26% ACS-ZM003-2 (LOQ=0.1% determined on validation data); reference material: Certified reference material from the Joint Research Centre (JRC) of the European Commission and the American Oil Chemists' Society (AOCS) is used; methods used: qualitative and quantitative Real Time PCR (general test procedure takes into account the standards EN ISO 24276:2013-10, 21571:2013-08, 21570:2013-08, 21569:2013-08); working sample: numbered seed sample containing approx. 1500 seeds based on the 1000 seed weight.

GMO detection; Event specific T25; Real time PCR; 1000 Zea mays seeds; Reference material: T25 positive flour obtained from RUTILAN; LOD: 0.067%. The test target was detected.

**A very diverse way of reporting!**

**GMO test**  
**Testing objective:** AP, Assessment of presence and Estimation of level;  
**Testing approach:** 15 groups of 100 seeds;  
**Testing technology:** rtPCR  
**Assay target:** T25 (ACS-ZM003-2)  
**Working sample:** pure seed fraction, 1500 seeds  
**Certified reference material:** internal reference material  
**LOD:** 0,01% m/m

The test target was not detected

GM Screening Test in Maize		
Weight of the working sample	:	330 g
Number of seeds examined	:	1,500 (pure seeds, washed seeds) at the request of the client
Approach and technology	:	qualitative Rt-PCR
Assay target	:	35S promoter (mLOD 0.01%*)
Results	:	35S promoter                      Detected

\* mLOD (method specified limit of detection), determined within the context of the validation.

# PT24 – OIC-filling exercise - evaluation

1. A list of items to be checked for the evaluation of the certificates was issued

Type of	Item
General	01 - Stated by the applicant
	02 - Information
Technical	03 - Objective1
	04 - Objective2
	05 - Testing approach
	06 - Testing technology
	07 - Working sample description: type and size
	08 - Testing plan
	09 - Testing targets
	10 - LOD
	11 - LOQ
	12 - Reference materials
	13 - Reporting results: assessment of presence
	14 - Probability statement on negative qualitative result
	15 - Reporting results: estimatation of level
	16 - Rep. results: confidence interval/probabilty statement

# PT24 – OIC-filling exercise - evaluation

1. A list of items to be checked for the evaluation of the certificates was issued
2. Data were extracted from each certificate

Applicant's request (testing objective): To determine the presence and level of the specified GMO event.  
 Testing approach: DNA-based.  
 Testing technology: PCR-based (qualitative).  
 Assay target: T25 (maize).  
 Description of the working sample: Pure seed fraction 100.0%; no inert matter or other seed species detected.  
 Number of seeds in the working sample: 1,500 seeds.  
 Reference material: Certified reference material provided by AOCS.  
 Limit of detection (LOD): 0.15%.  
 Result: The test target (T25) was detected. The estimate of % GM in number of seeds was 0.61%. 95% CI: [0.22%, 1.00%].

Type of	Item	Reported
General	01 - Stated by the applicant	
	02 - Information	
Technical	03 - Objective1	To determine the presence and level of the specified GMO event
	04 - Objective2	see above
	05 - Testing approach	DNA-based
	06 - Testing technology	PCR-based (qualitative)
	07 - Working sample description: type and size	Pure seed fraction 100.0%; no inert matter or other seed species detected. 1500 seeds
	08 - Testing plan	
	09 - Testing targets	T25 (maize)
	10 - LOD	0.15%
	11 - LOQ	na
	12 - Reference materials	Certified reference material provided by AOCS
	13 - Reporting results: assessment of presence	The test target (T25) was detected.
	14 - Probability statement on negative qualitative result	not applicable
	15 - Reporting results: estimatation of level	The estimate of % GM in number of seeds was 0.61%.
	16 - Rep. results: confidence interval/probabilty statement	95% CI: [0.22%, 1.00%].


# PT24 – OIC-filling exercise - evaluation

3. One of the following evaluations was attributed to each item:

- OK
- Missing
- Incorrect
- Incomplete
- Inaccurate
- Optional
- Not applicable

4. The evaluation was

- performed independently by 3 technical experts (Elena, Bruno, Enrico), and a consensus was reached
- reviewed (for the general part) by the Accreditation Dept. (Branka and Florina)

 <b>ISTA</b> Seed Quality Assurance		<b>ISTA Secretariat</b> Richtarkade 18, 8304 Wallisellen, Switzerland Phone: +41 44 838 60 00   Fax: +41 44 838 60 01 Email: ista.office@ista.ch www.seedtest.org	
18 June 2026			
24TH ISTA GMO PROFICIENCY TEST ON MAIZE (ZEA MAYS) – OIC EVALUATION			
TW01 - Taiwan Seed Improvement and Propagation Station, MOA			
Lab, accreditation	TW01 - not accredited for GMO		
General items	Reported	Synthetic evaluation	Explanation
Stated by the applicant		ok	
Information		ok	
Item of ISTA Rules Chapter 19.7		#NV	
Objective1	To determine the presence and level of the specified GMO event	Missing	should be: AP testing
Objective2	see above	ok	
Approach	DNA-based	Missing	should be: qualitative assays of seed groups
Technology	PCR-based (qualitative)	Missing	e.g., either end-point or rtPCR (used qualitatively)
Working sample description: type and size	Pure seed fraction 100.0%; no inert matter or other seed species detected. 1500 seeds	ok	
Testine plan		Missing	missing_explicit testine plan

5. Results were compiled and sent to the participating labs by the GM PT organizer (Nadine)

# PT24 – OIC-filling exercise – results per item

Overall performance of the 9 laboratories reporting specific items

Type of item	Item	OK <sup>(1)</sup>	Missing	Incom- plete	Inaccu- rate	Incor- rect	Optio- nal	Not applica- ble	Total	
General	01 - Stated by the applicant	8 (89%)		1					9	
	02 - Information	6 (67%)	3						9	
Technical	03 - Objective1	1 (11%)	7		1				9	
	04 - Objective2	3 (33%)	3	1	2				9	
	05 - Testing approach	2 (22%)	4	1	2				9	
	06 - Testing technology	8 (89%)	1						9	
	07 - Working sample description: type and size	7 (78%)		1		1			9	
	08 - Testing plan	3 (43%)	4					2	9	
	09 - Testing targets	2 (22%)				7			9	
	10 - LOD	3 (33%)	1	5					9	
	11 - LOQ	1 (50%)	1					7	9	
	12 - Reference materials	4 (44%)	2	2	1				9	
	13 - Reporting results: assessment of presence	7 (78%)			2				9	
	14 - Probability statement on negative qualitative result	0 (0%)						3	6	9
	15 - Reporting results: estimatation of level	2 (50%)		2					5	9
	16 - Rep. results: confidence interval/probabilty statement	2 (50%)	2						5	9
<b>Total</b>		<b>59 (50%)</b>	<b>28</b>	<b>13</b>	<b>8</b>	<b>8</b>	<b>3</b>	<b>25</b>	<b>144</b>	

<sup>(1)</sup> Percentage based on number of applicable and non optional items

# PT24 – OIC-filling exercise – results per item

Overall performance of the 9 laboratories reporting specific items

Type of item	Item	OK <sup>(1)</sup>	Missing	Incomplete	Inaccurate	Incorrect	Optional	Not applicable	Total
General	01 - Stated by the applicant	8 (89%)		1					9
	02 - Information	6 (67%)	3						9
Technical	03 - Objective1	1 (11%)	7		1				9
	04 - Objective2	3 (33%)	3	1	2				9
	05 - Testing approach	2 (22%)	4	1	2				9
	06 - Testing technology	8 (89%)	1						9
	07 - Working sample description: type and size	7 (78%)		1		1			9
	08 - Testing plan	3 (43%)	4					2	9
	09 - Testing targets	2 (22%)				7			9
	10 - LOD	3 (33%)	1	5					9
	11 - LOQ	1 (50%)	1					7	9
	12 - Reference materials	4 (44%)	2	2	1				9
	13 - Reporting results: assessment of presence	7 (78%)			2				9
	14 - Probability statement on negative qualitative result	0 (0%)					3	6	9
	15 - Reporting results: estimation of level	2 (50%)		2				5	9
	16 - Rep. results: confidence interval/probabilty statement	2 (50%)	2					5	9
<b>Total</b>		<b>59 (50%)</b>	<b>28</b>	<b>13</b>	<b>8</b>	<b>8</b>	<b>3</b>	<b>25</b>	<b>144</b>

<sup>(1)</sup> Percentage based on number of applicable and non optional items

# PT24 – OIC-filling exercise – results per lab

Performance of individual laboratories in reporting the 14 technical items

Lab	GMO accreditation	OK <sup>(1)</sup>	Missing	Incomplete	Inaccurate	Incorrect	Optional	Not applicable	Total
1	yes	5 (38%)	3	2	2	1	1		14
2	no	1 (8%)	7	1	2	2		1	14
4	yes	8 (67%)	1	2		1		2	14
3	yes	5 (56%)	2	1		1		5	14
5	yes	8 (80%)		1	1		1	3	14
6	yes	8 (80%)		1	1		1	3	14
7	yes	2 (22%)	4	1	1	1		5	14
8	no	5 (42%)	4	2		1		2	14
9	yes	3 (30%)	4	1	1	1		4	14
<b>Totale</b>		<b>45 (46%)</b>	<b>25</b>	<b>12</b>	<b>8</b>	<b>8</b>	<b>3</b>	<b>25</b>	<b>126</b>

<sup>(1)</sup> Percentage based on number of applicable and non optional items

## PT24 – OIC-filling exercise – take home lesson

- The exercise was very useful
- Extreme variability in reporting results
- The ISTA system for reporting GMO testing results has the potential to provide clarity and uniformity, but laboratories must implement it
- Preliminary proposals for Rules amendments
  - Add a definition of “Testing plan” in Rule 19.2 Definitions
  - Further improve clarity in Rules 19.7 Reporting results
  - Harmonize the description of “Testing plan” in 19.7.1, 19.7.2, and 19.7.3
- Based on the checklist developed in this exercise, the certificate learning tool for GMO testing will be implemented providing text examples of how each aspect should be reported correctly
- For future OIC-filling exercises in PTs, the evaluation report will be prepared in the GMO database at the ISTA Secretariat

# PT25 under preparation

- Next round will be on canola (*Brassica napus*)
- Preliminary evaluation of Trait Purity by seed provider currently underway
- Design of the test in progress
- A new statistical tool has been developed to evaluate the suitability of source materials for GMO PTs (Jean-Louis Laffont – STA)
- Also this PT will include the OIC-filling exercise
  
- Time frame (tentative)
  - August '26 Announcement
  - October '26 Applications + MTA
  - Spring '27 Shipping of samples

# The GMO Committee



Nadine Ettel  
TCom Manager



Laura  
Bowden



Elena  
Perri



Enrico  
Noli



Rene  
Mathis



Andrea  
Jonitz



Branislava Opra  
Quality Manag.



Florina Palada.  
Accreditation Dept.



Tajinder  
Greval



Kirk  
Remund



Beni  
Kaufman



Ana Laura  
Vicario



Jean-Louis  
Laffont



Benoit  
Maes



Dwarkes  
h Parihar



Florence  
Goubet



Christoph Haldemann



Cheryl Dollard



Keshavulu Konusoth



Vanessa Sosa

Ecom Liaisons

Former Chairs

*Thank you all for your  
collaboration!*

Thank you for your attention

