

*Brassica napus* L. (*Brassicaceae*)

**General shape:** Wide slightly flattened sphere.

**Normal size:**  
2.0 mm W-3.0 mm L

**Color:** Reddish brown to grey-black.

**Texture:** Fine reticulations with stipples over complete surface appearing as pin-points of light.

**Distinguishing features:** Prominent embryo indentation in the seed coat. Scar area has a distinct dark circle resembling a horse shoe shape. Squared off look to the scar end when viewed from the side.

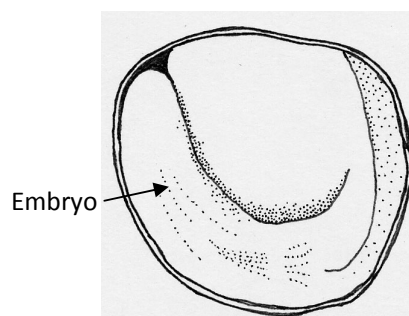
**Embryo:** Folded embryo with minimal endosperm present.



*Brassica napus* seeds



*Brassica napus* seed



Cross-section of *Brassica napus* seed

Authored by Susan Putz  
Canadian Food Inspection Agency, Canada

Images by Jo Jones; drawing by Ken Allison