

*Brassica rapa* L. (*Brassicaceae*)

**General shape:** Flattened oval.

**Normal size:**

1.5 -2.0 mm, round

**Color:** Yellow to mottled yellow, dark reddish-brown to dark grey.

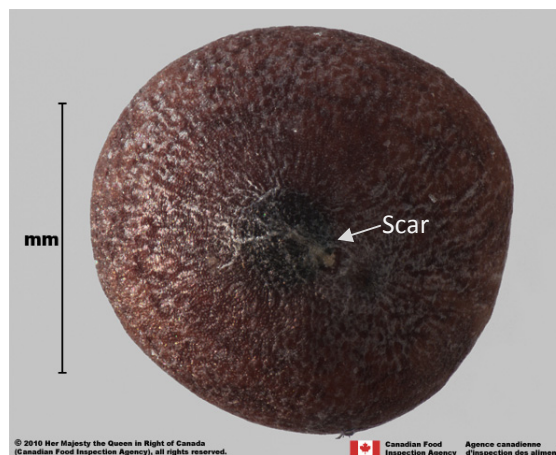
**Texture:** Distinct reticulations with small interspaces and small stipples.

**Distinguishing features:** Reticulations peter out towards the scar end. Reticulations are sometimes quite prominent. Scar and chalaza area sometimes appear blackened and raised with a distinct ring around them. Often a prominent embryo indentation in the seed coat.

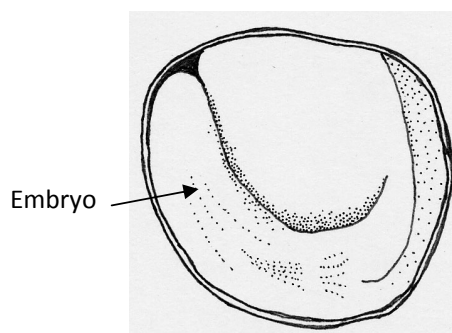
**Embryo:** Folded embryo with minimal endosperm present.



*Brassica rapa* seeds



*Brassica rapa* seed



Cross-section of *Brassica rapa* seed