

Ambrosia artemisiifolia L. (Asteraceae)

General shape: Obovoid to oblanceolate, with a ring of spines near the top, urn shaped.

Normal size:

3.0–4.0 mm L x 1.8-2.5 mm W

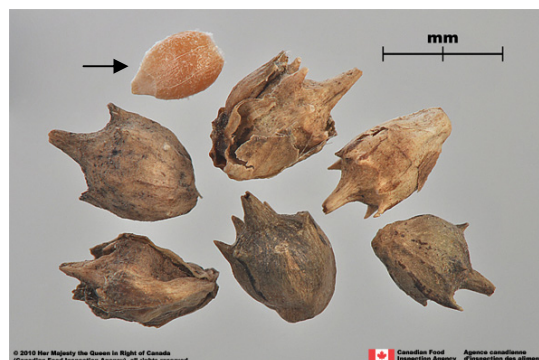
Color: Yellowish-brown to reddish-brown sometimes with a purplish tinge near the crown.

Texture: Woody outer coat (involucre) enclosing a shiny brown inner coat.

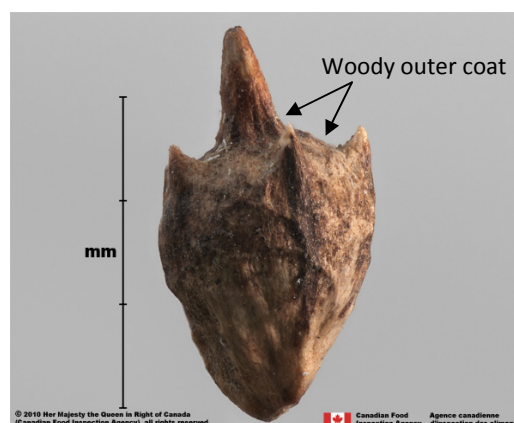
Distinguishing features: Outer coat has a central apical protuberance which is surrounded by a circle of 5 to 8 shorter, slender projections appearing like a crown. The inner achene is smooth and slightly lustrous and obovoid in shape.

Embryo: Embryo with well-developed cotyledons and a broad stalk having a truncate top, no endosperm.

Authored by Susan Putz
Canadian Food Inspection Agency, Canada



Ambrosia artemisiifolia involucres (achenes) and inner achene (arrow)



Ambrosia artemisiifolia involucre (achene)

Images by Jo Jones