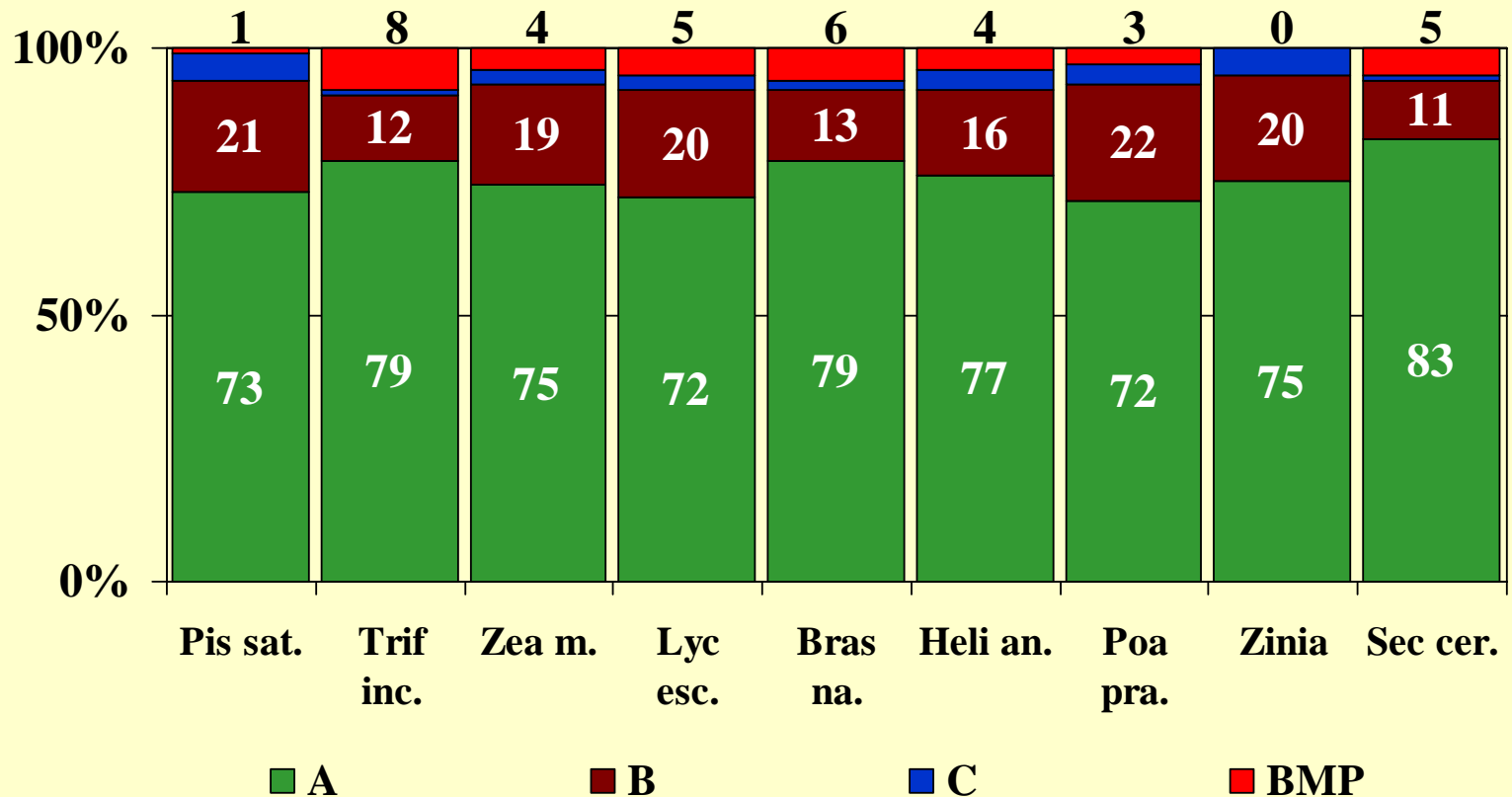


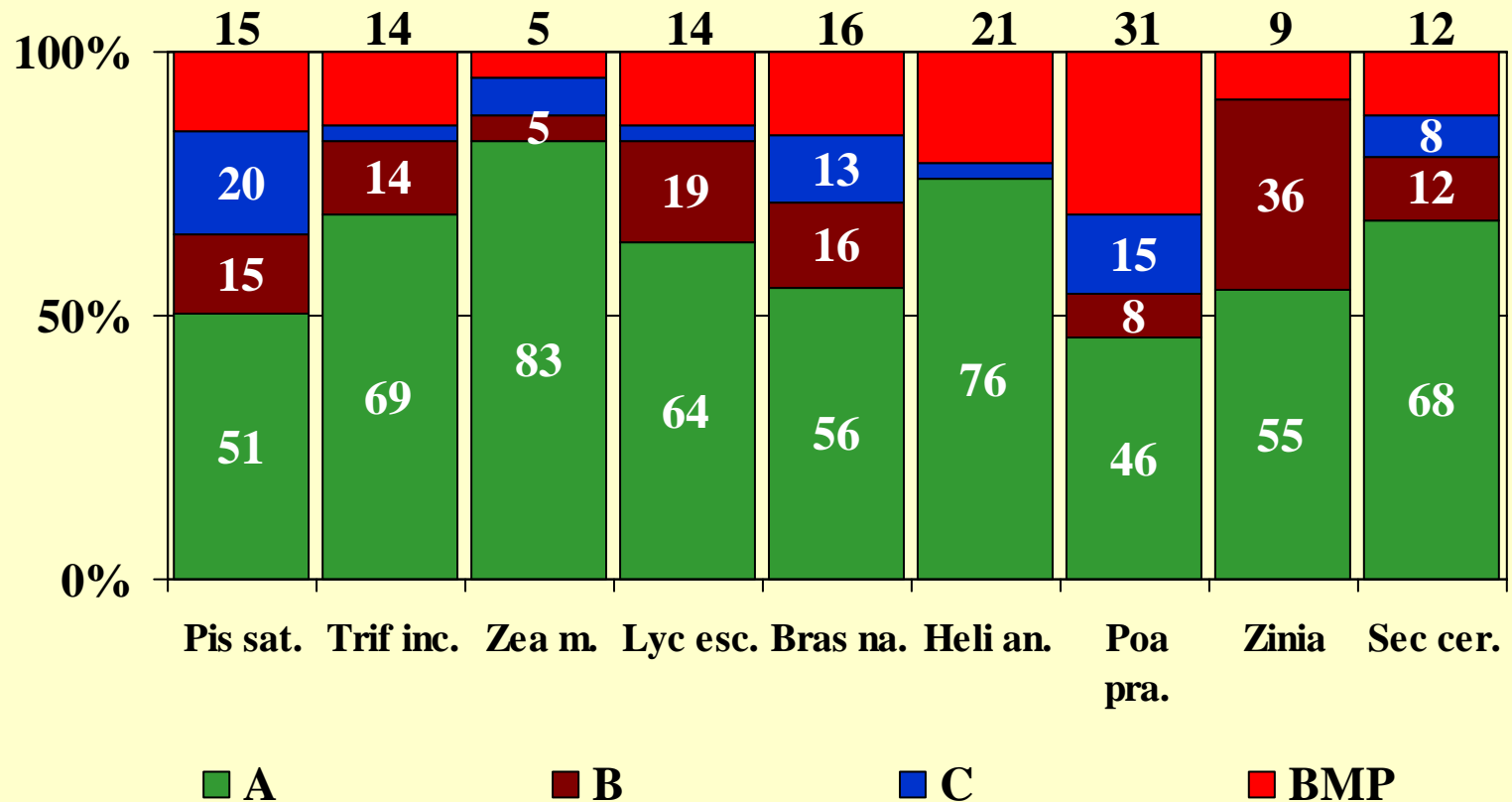
Report of the Proficiency Test Committee

Reported on the ISTA Ordinary
Meeting 2006 by Günter Müller

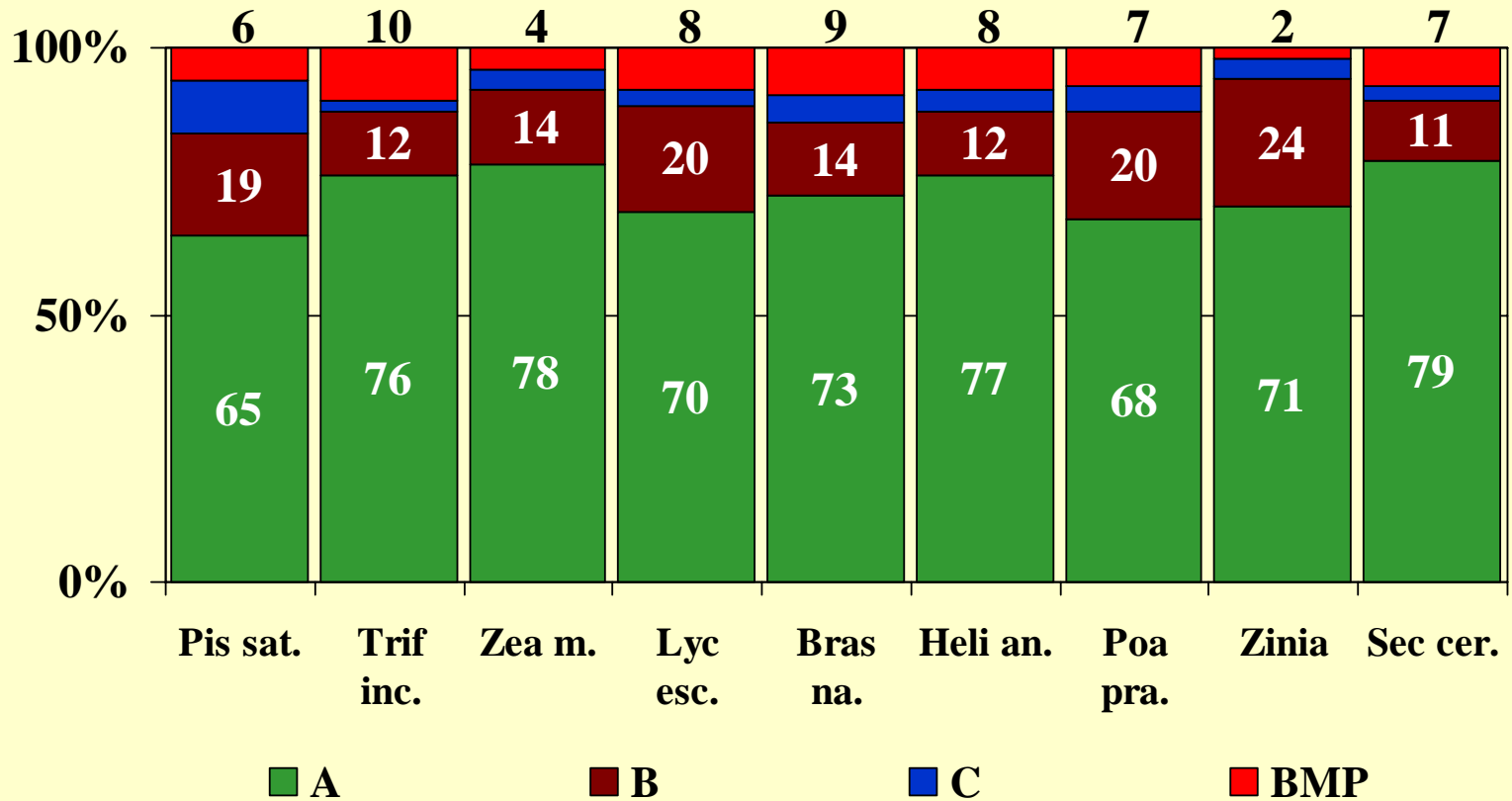
Germination: In-round Rating Accredited Labs



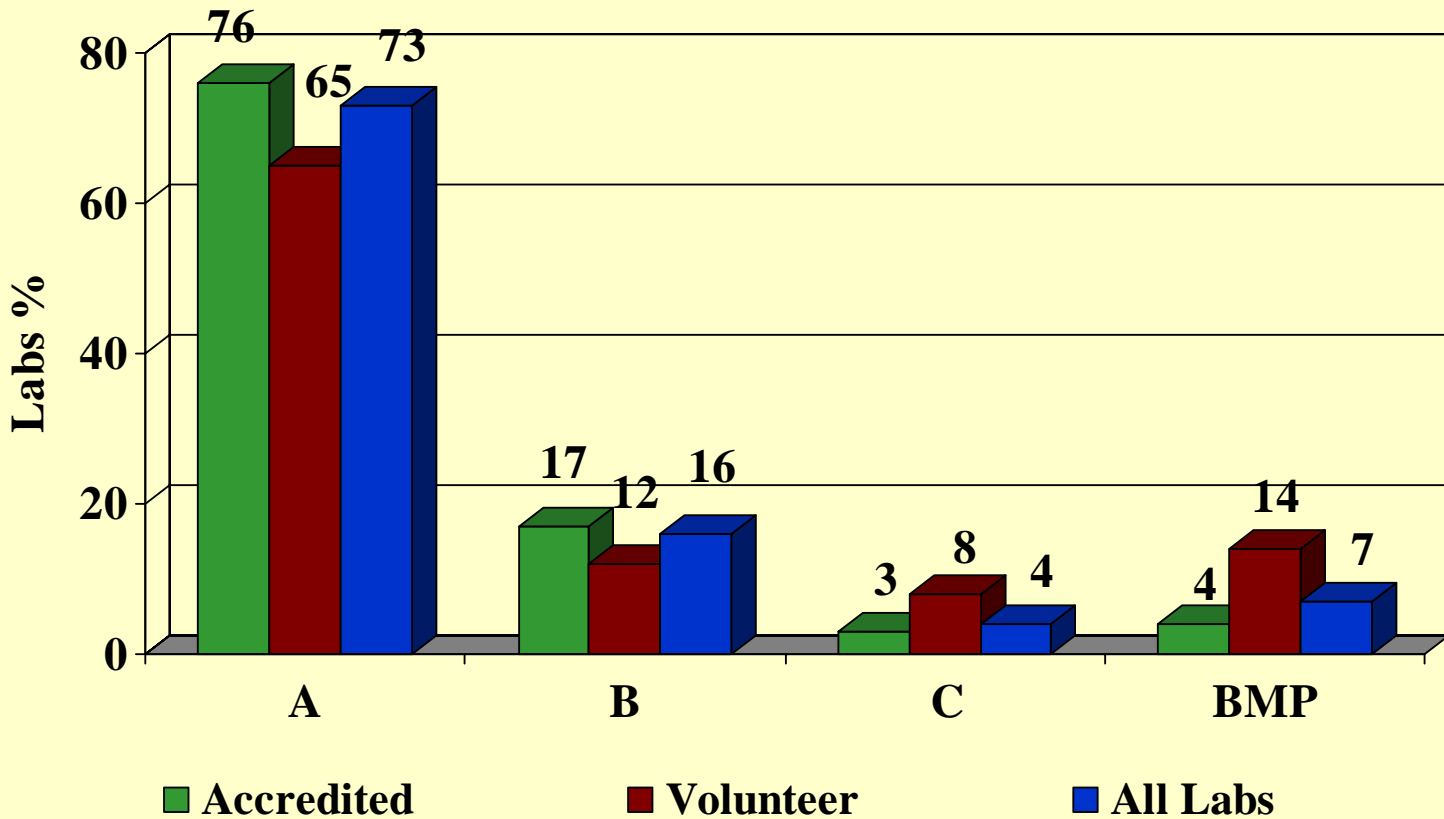
Germination: In-round Rating Volunteers



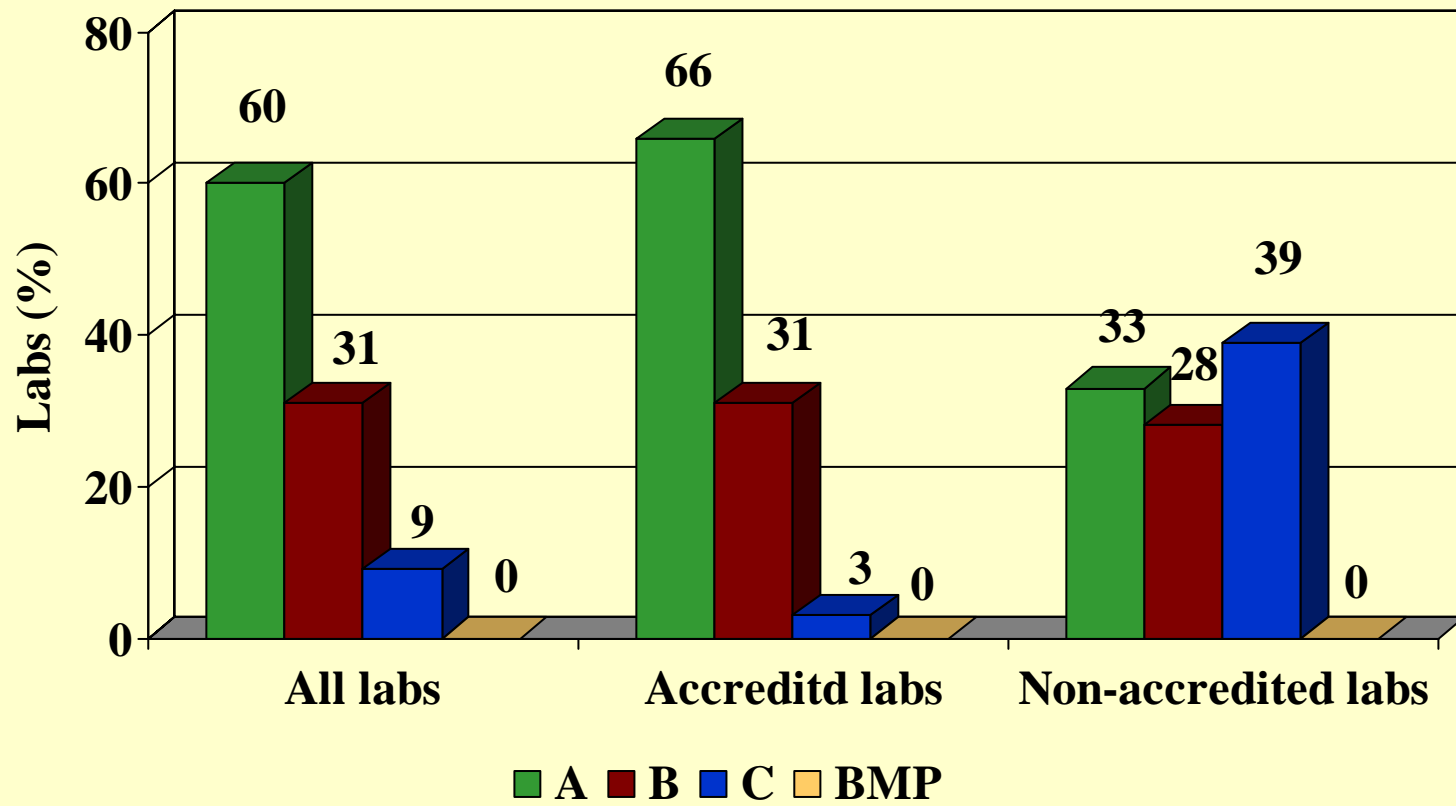
Germination: In-round Rating all Labs



Germination: In-round Ratings since 02-3 till 05-2



Germination: Overall Rating over six Test Rounds



OSD Retrieval Rate since 2003

Test Round	# of Added Seeds	Average Retrieval rate %
03-1 <i>Trifolium incarnatum</i>	29	82.4
03-3 <i>Lycopersicon esculentum</i>	27	89.6
04-1 <i>Brassica napus</i>	28	82.5
04-3 <i>Phleum pratense</i>	28	95.0
05-2 <i>Secale cereale</i>	41	94.6

03-1 OSD *Trifolium incarnatum*

Species	# of seeds	Retrieval rate (%)
<i>Rumex sp.</i>	3	95.6
<i>Polygonum aviculare</i>	2	93.4
<i>Plantago lanceolata</i>	2	93.4
<i>Amaranthus sp.</i>	4	91.2
<i>Chenopodium sp.</i>	3	90.0
<i>Setaria sp.</i>	2	86.7
<i>Cuscuta sp.</i>	3	83.5
<i>Medicago sativa</i>	4	70.6
<i>Melilotus sp.</i>	4	67.0
<i>Medicago lupulina</i>	2	59.3

03-3 OSD *Lycopersicon esculentum*

Species	# of seeds	Retrieval rate (%)
<i>Plantago lanceolata</i>	3	97.9
<i>Amaranthus retroflexus</i>	2	94.2
<i>Panicum capillare</i>	2	93.8
<i>Daucus carota</i>	3	93.5
<i>Echinochloa crus-galli</i>	3	91.5
<i>Chenopodium album</i>	4	91.3
<i>Setaria italica</i>	3	92.4
<i>Datura stramonium</i>	1	90.2
<i>Cuscuta sp.</i>	2	87.1
<i>Portulaca oleracea</i>	3	88.1
<i>Solanum nigrum</i>	2	79.9
<i>Digitaria sanguinalis</i>	1	63.4

04-1 OSD *Brassica napus*

Species	# of seeds	Retrieval rate (%)
<i>Galium aparine</i>	3	94.5
<i>Polygonum aviculare</i>	3	91.9
<i>Galeopsis tetrahit</i>	2	89.6
<i>Chenopodium sp.</i>	3	85.8
<i>Raphanus sativus</i>	4	84.1
<i>Sinapis alba</i>	4	83.3
<i>Thlaspi arvense</i>	2	81.7
<i>Lotus corniculatus</i>	4	73.3
<i>Sinapis arvensis</i>	3	62.3

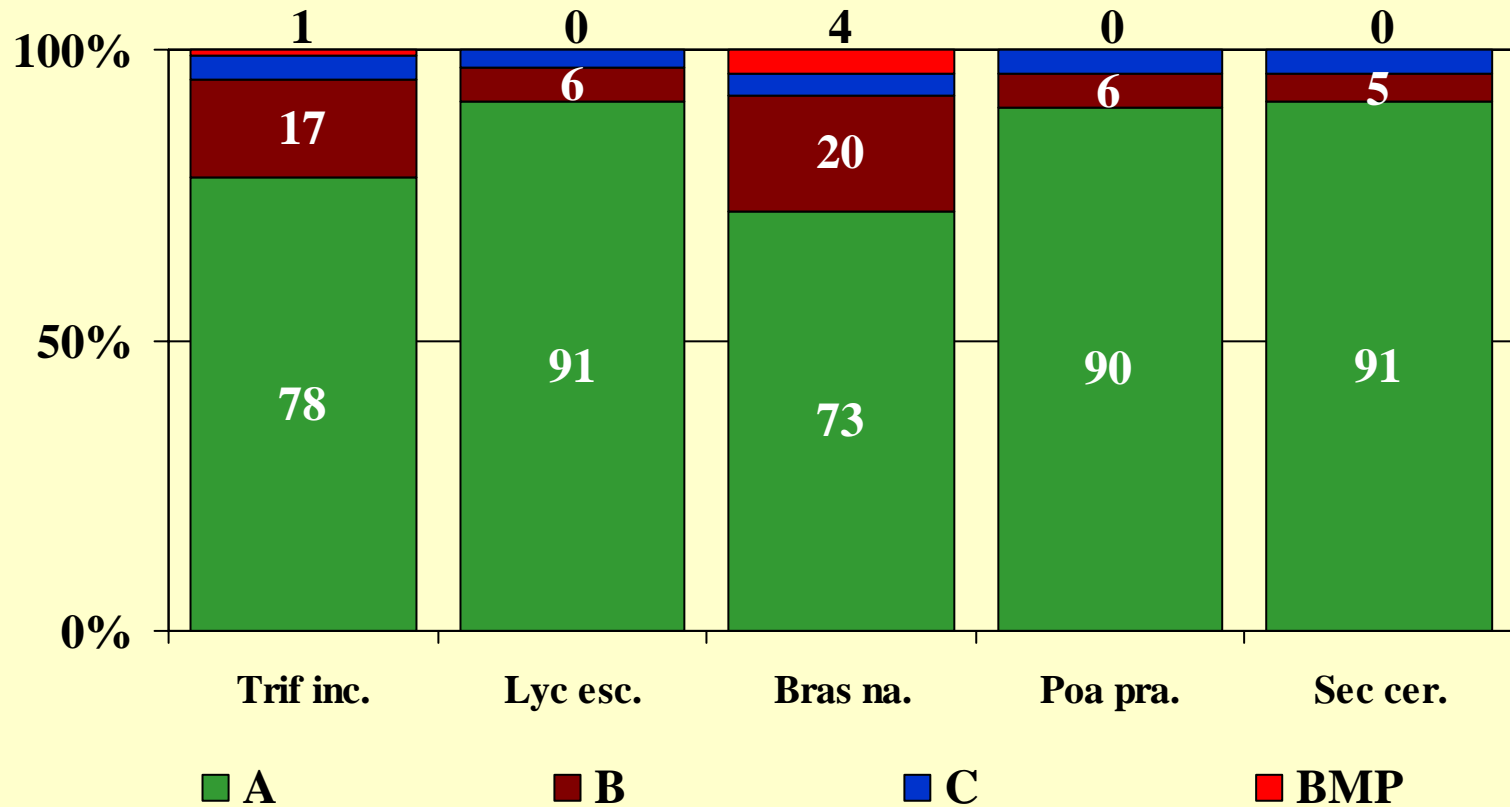
04-3 OSD *Phleum pratense*

Species	# of seeds	Retrieval rate (%)
<i>Trifolium repens</i>	2	98.4
<i>Silene noctiflora</i>	2	98.4
<i>Cirsium arvense</i>	2	97.3
<i>Echinochloa crus-galli</i>	2	97.3
<i>Anthemis cotula</i>	4	96.2
<i>Panicum cappillare</i>	3	95.3
<i>Poa pratensis</i>	4	95.4
<i>Lotus corniculatus</i>	2	92.9
<i>Tripleuros. perforatum</i>	2	92.4
<i>Capsella bursa-pastoris</i>	3	92.4
<i>Plantago major</i>	2	90.2

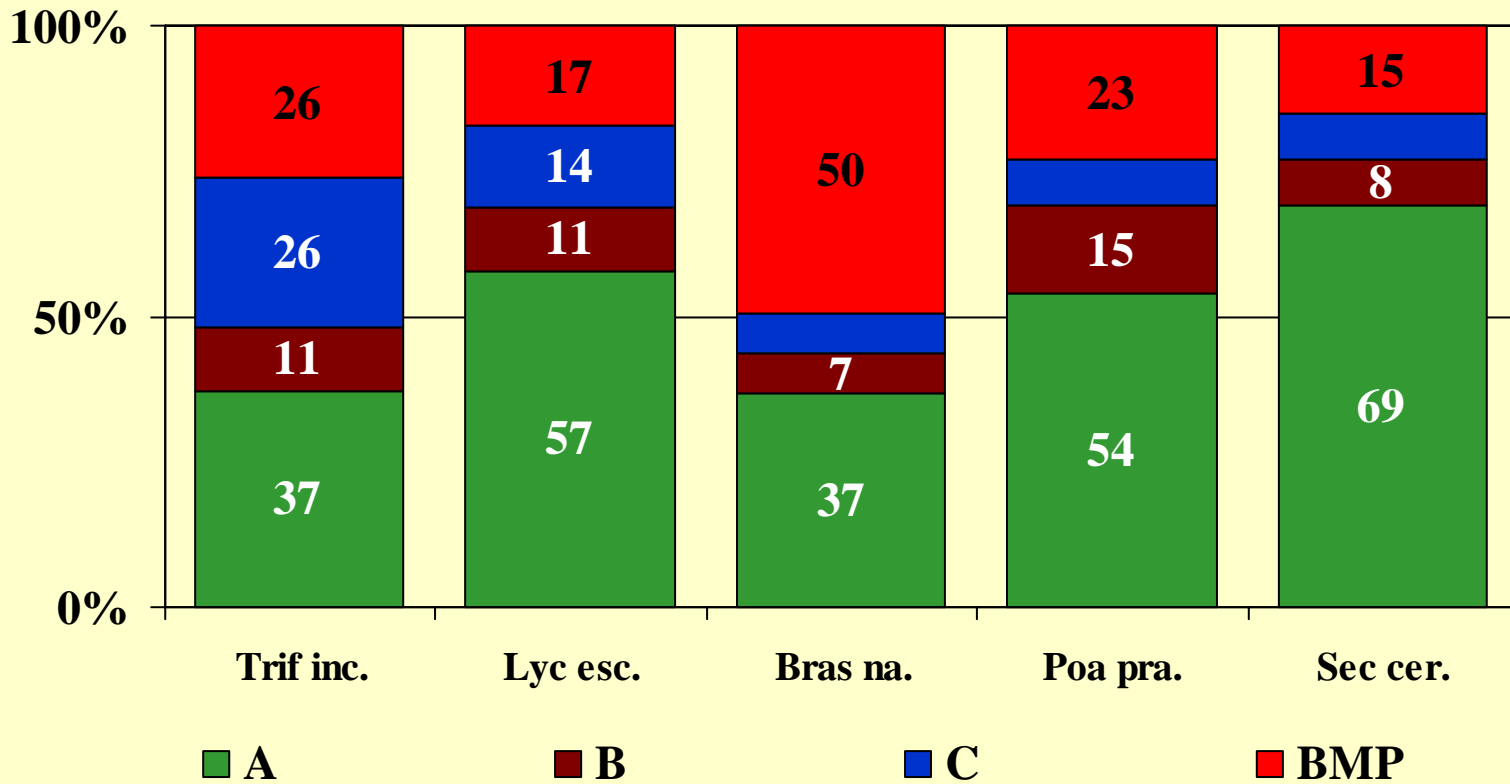
05-2 OSD *Secale cereale*

Species	# of seeds	Retrieval rate (%)
<i>Triticum aestivum</i>	4	99.1
<i>Galium aparine</i>	4	97.4
<i>Avena sativa</i>	5	97.0
<i>Hordeum vulgare</i>	5	96.2
<i>Avena fatua</i>	4	94.8
<i>Bromus hordeaceus</i>	5	94.2
<i>Sinapis alba</i>	4	92.2
<i>Lolium multiflorum</i>	4	91.1

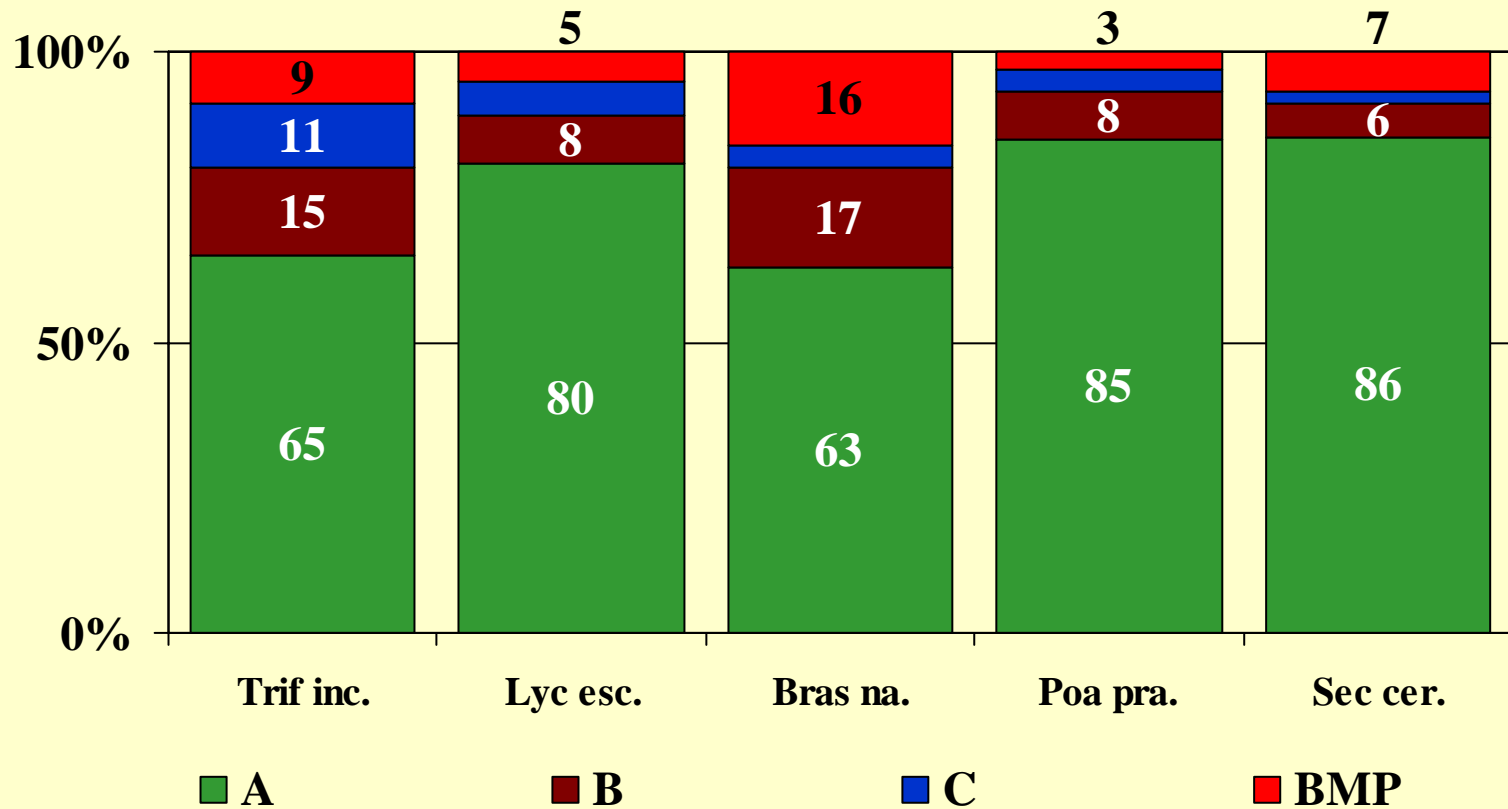
OSD: In-round Rating Accredited Labs



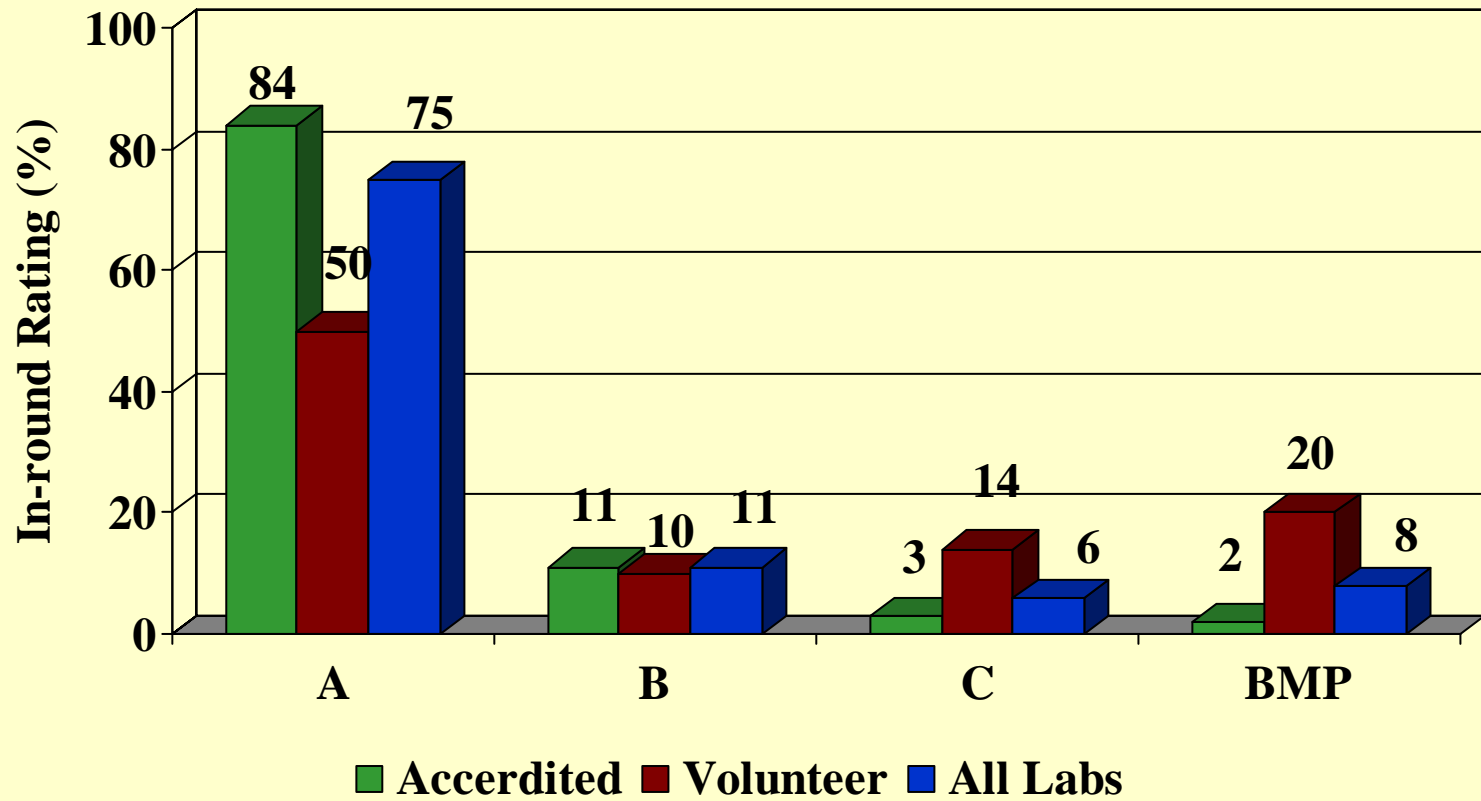
OSD: In-round Rating Volunteers



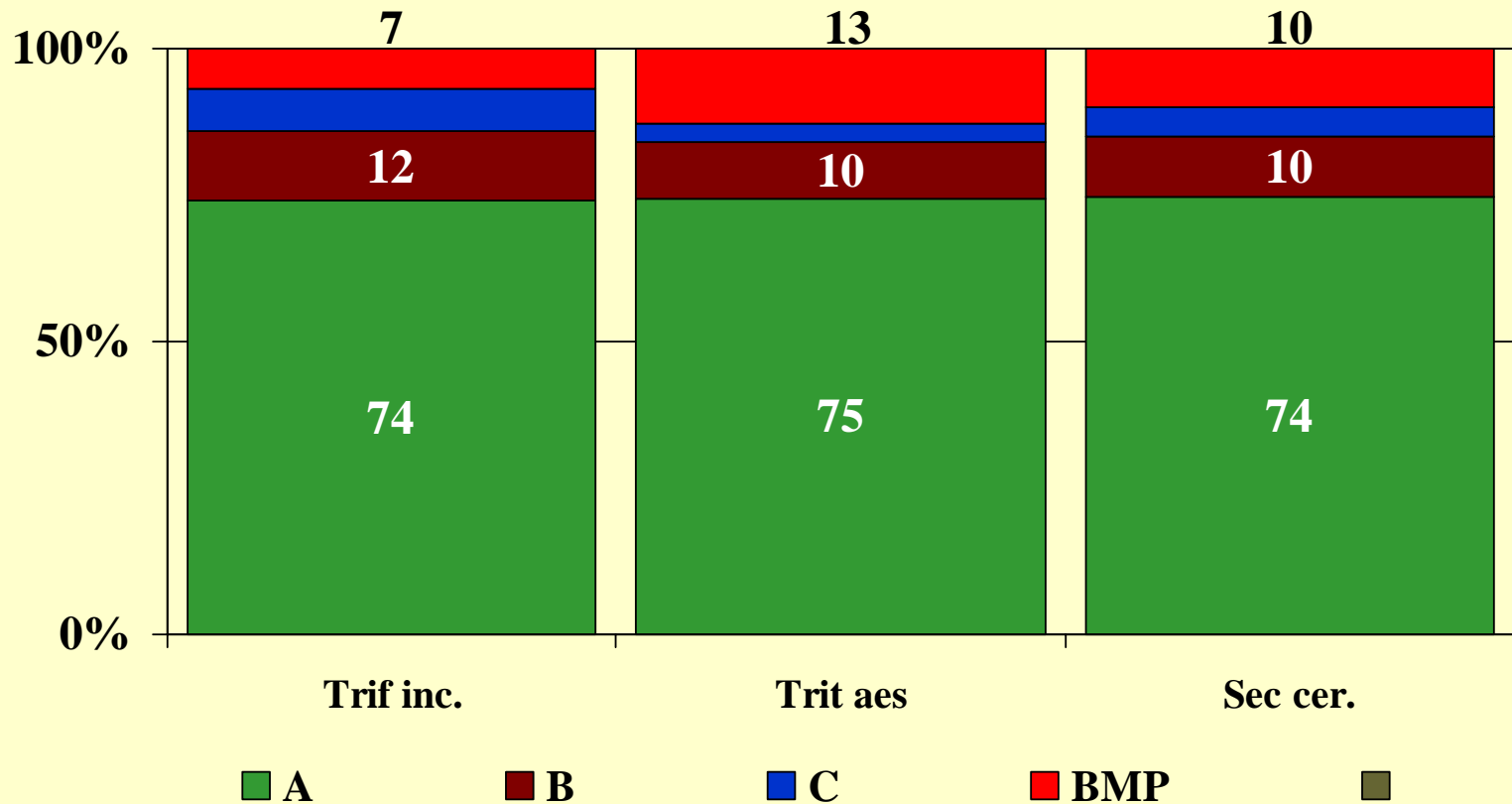
OSD: In-round Rating all Labs



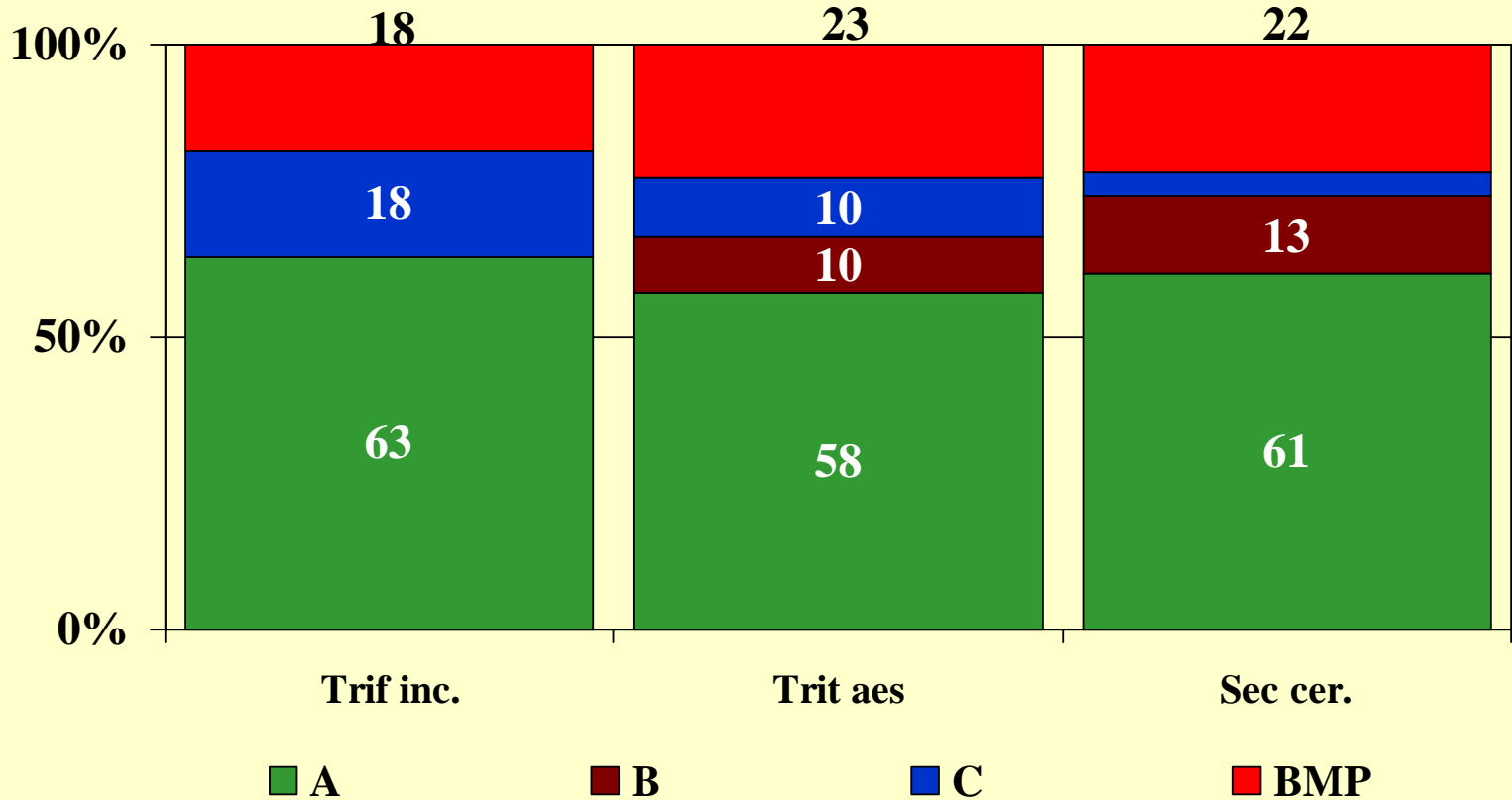
OSD In-round Rating over 5 Test Rounds



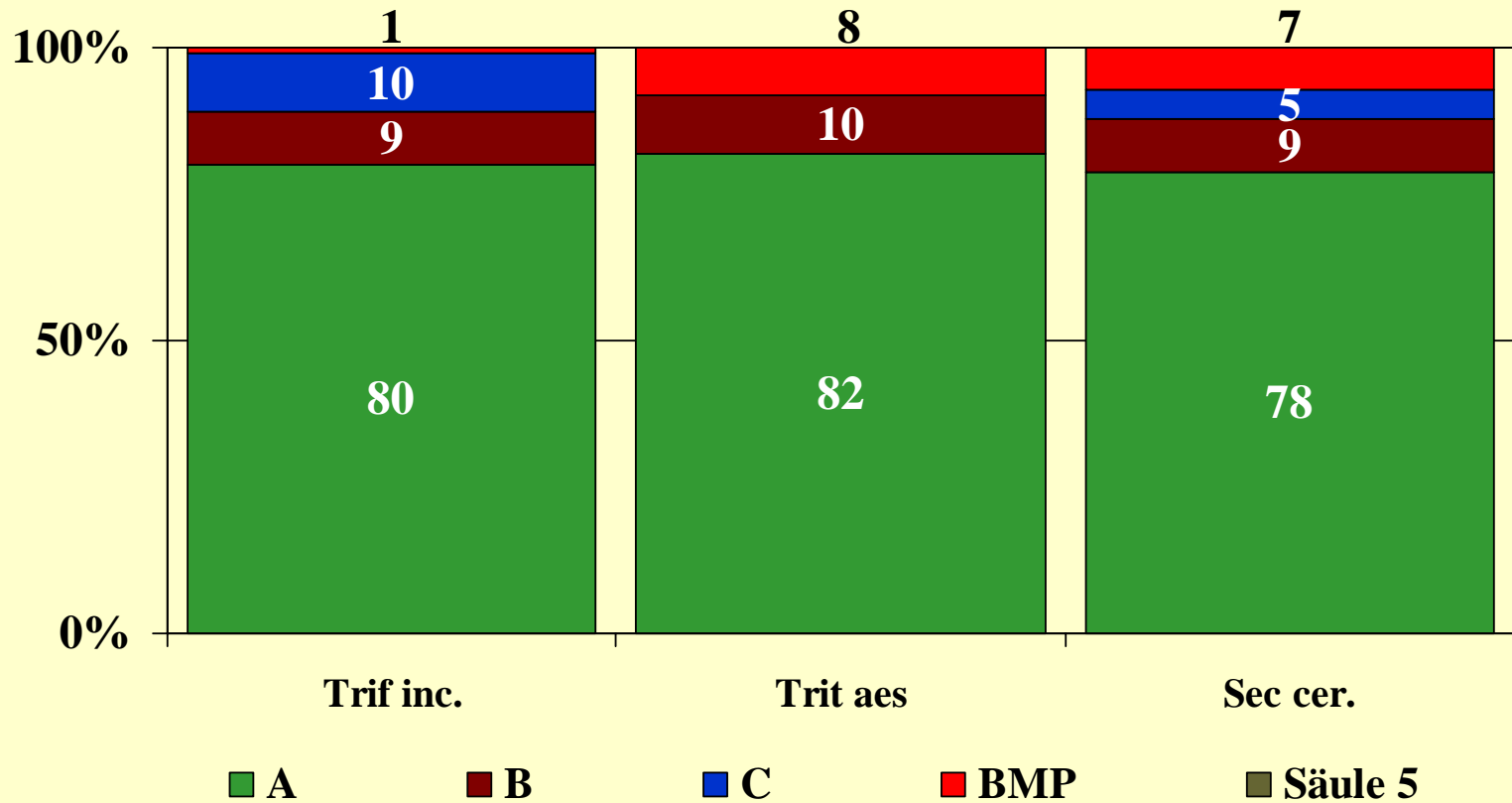
Moisture: In-round Rating Accredited Labs



Moisture: In-round Rating Volunteers



Moisture: In-round Rating all Labs



Thank you for your Attention!