

**Working Programme of the
ISTA Flower Seed
Testing Committee
2004-2007**

ACTIVITY REPORT 2005-2006

Zita Ripka



WORKING PROGRAMME OF THE FLOWER SEED TESTING COMMITTEE 2004-2007

A RULES DEVELOPMENT

A.1-3 Introduction of New Methods, Species, Rules Changes

B PUBLICATIONS

B.1 Rules accompanying publications

B.2 Training publications on specific seed testing topics

B.3 Scientific information publications

C WORKSHOPS AND SEMINARS

C.1 Training and education workshops

C.2 Seminars

D PROFICIENCY TESTS

E SPECIAL PROJECTS

WP A – RULES DEVELOPMENT

A.1 Introduction of New Methods

A.2 Introduction of New Species

To provide and introduce laboratory seed testing methods for new species which are tested in the laboratories but not included in the ISTA Rules is a general aim of the committee.

- *Catharanthus roseus*

- *Eustoma grandiflorum*

A.3 Introduction of Rules Changes

Parallel with the preparation of the handbook work sheets.

WP B -PUBLICATIONS

B.1 Rules accompanying publications

Preparation of the first ISTA Handbook on Flower Seed Testing

B.2 Training publications on specific seed testing topics

ISTA Flower Seed Testing Workshop Proceedings Summary will be finalized till 2006.

B.3 Scientific information publications

Presently none.

WP B1 -HANDBOOK

Participation in the work:

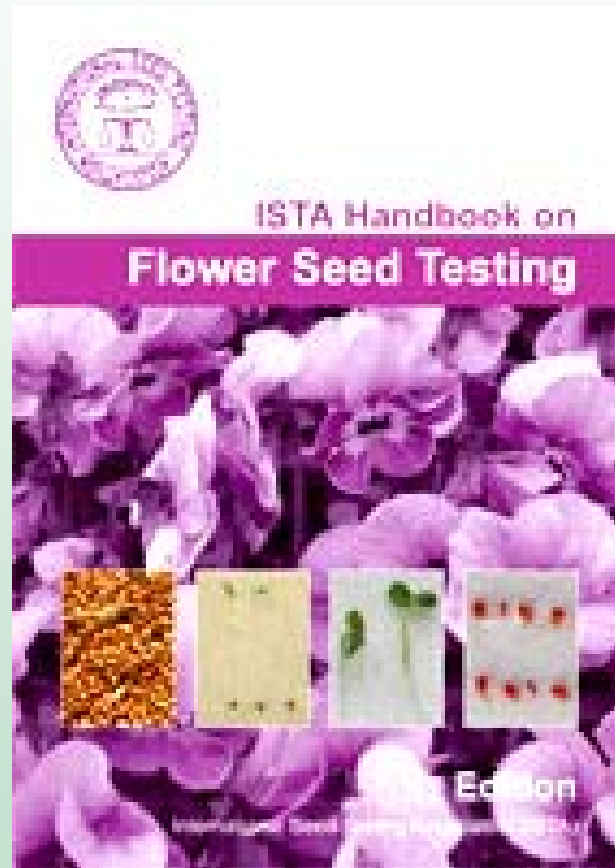
1. FSC members -data
2. Working Groups: leader + 6-8 members
3. Chair -draft
4. FSC members –discussion, acceptance
5. ISTA Committee Chairs –comments, acceptance
6. ISTA Secretariat -issue

WP B1 - HANDBOOK

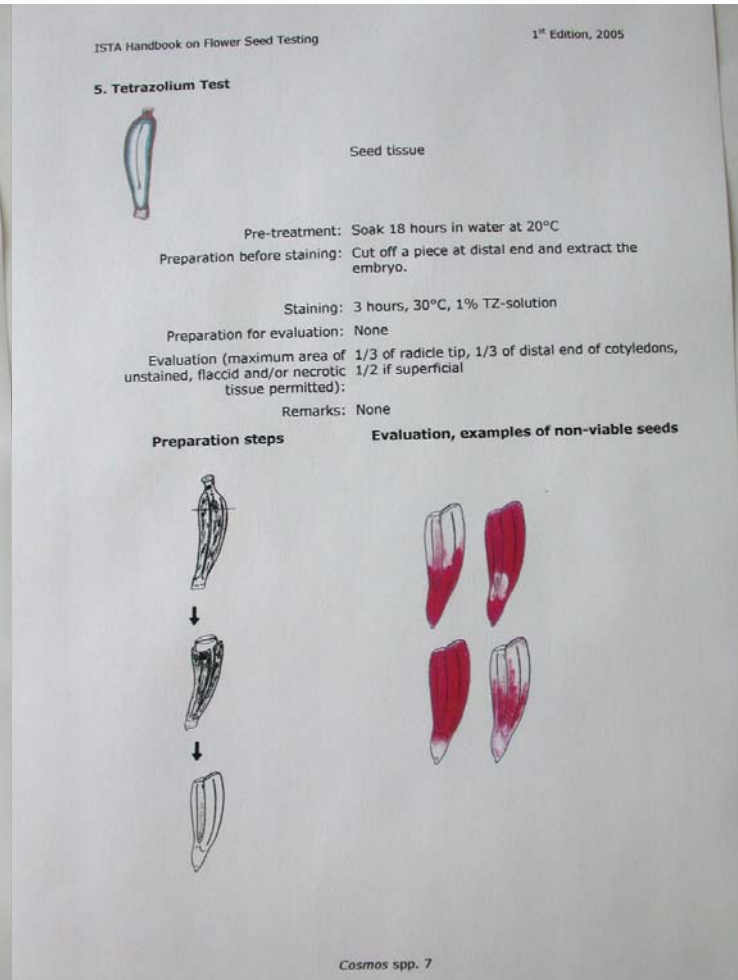
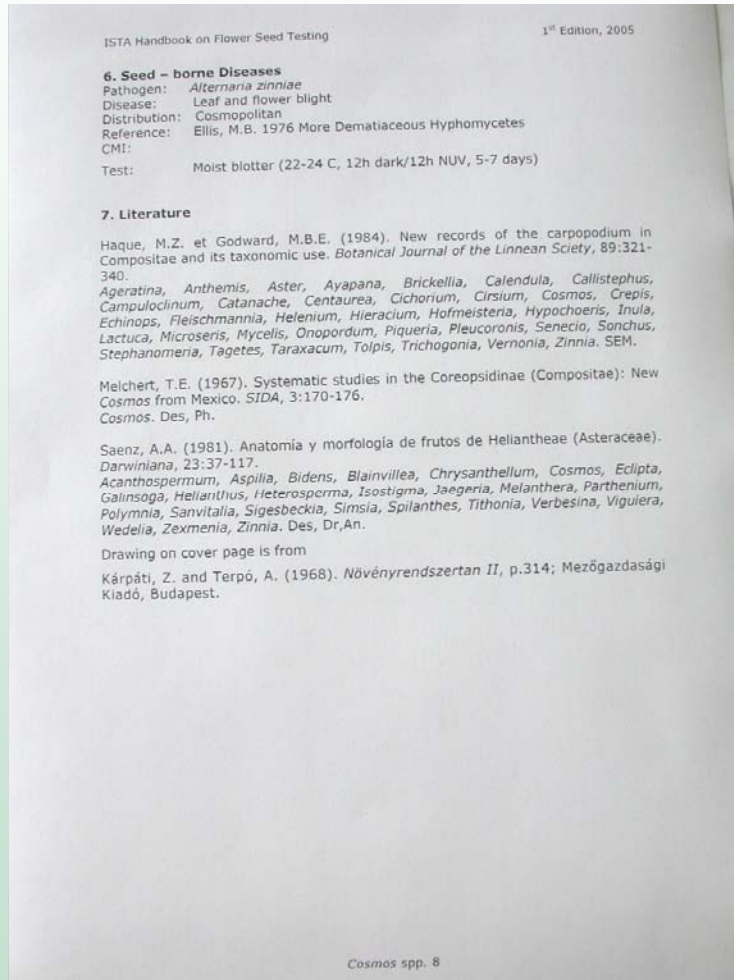
Procedure to prepare a work sheet:

1. Determine if the present methods are correct
2. Detect points where changes are needed
3. Proposal for changes
4. Draft text of the work sheet
5. Issue handbook work sheet final version

WP B1 -HANDBOOK



WP B1 -HANDBOOK



WP B1 - HANDBOOK

GENERAL PART

Introduction

Apparatus

WORK SHEETS

Glossary

Reference

WP B1 - HANDBOOK

Accepted work sheets:

Asteraceae: <i>Calendula, Gaillardia, Tagetes</i>	2001
Balsaminaceae: <i>Impatiens</i>	2001
Caryophyllaceae: <i>Dianthus</i>	2001
Violaceae: <i>Viola</i>	2001
Primulaceae: <i>Cyclamen</i>	2002
Solanaceae: <i>Petunia</i>	2002
Asteraceae: <i>Ageratum, Callistephus, Coreopsis, Cosmos, Gazania, Dahlia, Zinnia</i>	2004
Asteraceae: <i>Aster, Bellis, Centaurea, Helichrysum, Rudbeckia</i>	2005

WP B1 - HANDBOOK

Draft work sheets:

Scrophulariaceae: *Antirrhinum* 2006

Amaranthaceae: *Celosia* 2006

Lamiaceae: *Salvia* 2006

Acanthaceae: *Thunbergia* 2006

Verbenaceae: *Verbena* 2006

Next in 2006 :

Gypsophila, Portulaca, Tropaeolum, Eschscholzia

WP C – WORKSHOPS AND SEMINARS

C.1 Training and education workshops

Flower Seed Testing Workshop was advertised and organized –postponed.

C.2 Seminars

Not planned.

WP D – PROFICIENCY TESTS

RITA ZECCHINELLI

**Test organizer will present
the details**

A photograph of a field of flowers, primarily white and yellow daisies, with green foliage. The text is overlaid on the top left and bottom of the image.

FLOWER SEED COMMITTEE

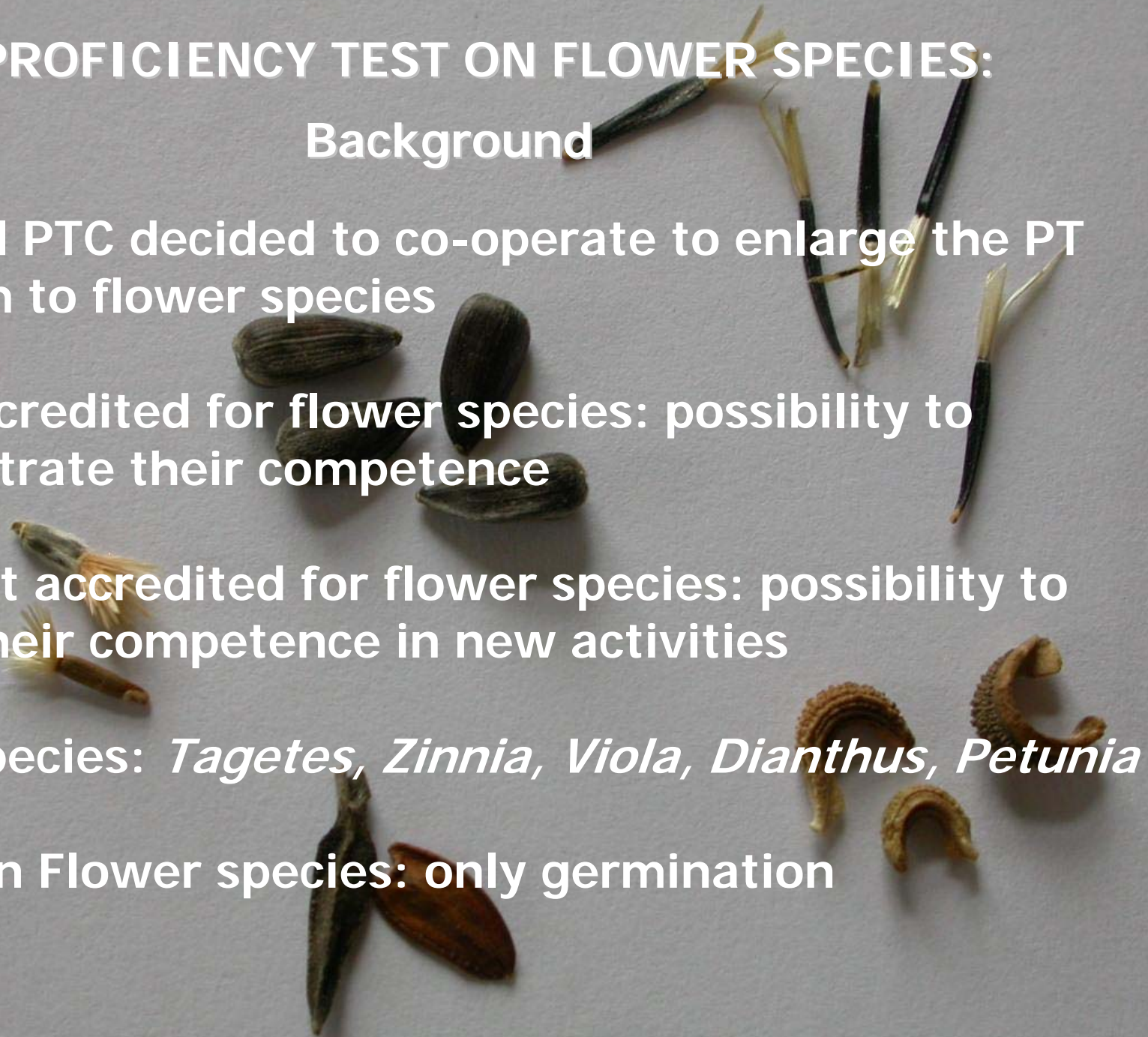
Rita Zecchinelli, ENSE-Italy

1st PROFICIENCY TEST ON FLOWER SPECIES

1st PROFICIENCY TEST ON FLOWER SPECIES:

Background

- FSC and PTC decided to co-operate to enlarge the PT program to flower species
- Labs accredited for flower species: possibility to demonstrate their competence
- Labs not accredited for flower species: possibility to check their competence in new activities
- 5 top species: *Tagetes*, *Zinnia*, *Viola*, *Dianthus*, *Petunia*
- 1st PT on Flower species: only germination



1st PROFICIENCY TEST ON FLOWER SPECIES:

Background

- 2003 - questionnaire: 47 labs interested in participation
- 2004 - organization
 - presentation at the FSC session (Budapest)
- 2005 - distribution of the samples (February)
 - final results (November)

1st PROFICIENCY TEST ON FLOWER SPECIES:

Organization

- Species: *Zinnia elegans*
- Round: 05/1
- Kind of test: only Germination
- Time: February, 2005
- Test leader: R. Zecchinelli (Italy)

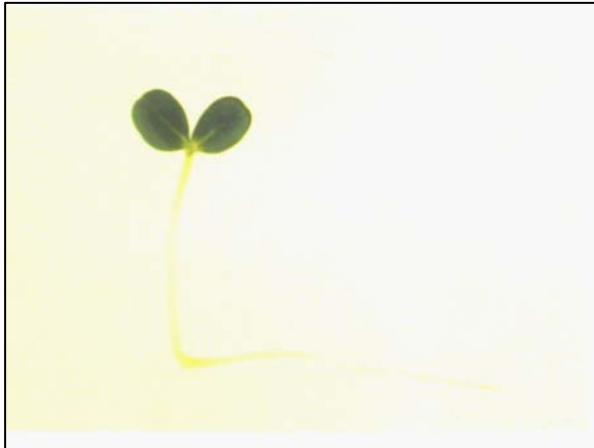
Zinnia elegans seeds



1st PROFICIENCY TEST ON FLOWER SPECIES:

Results

Zinnia elegans normal seedlings

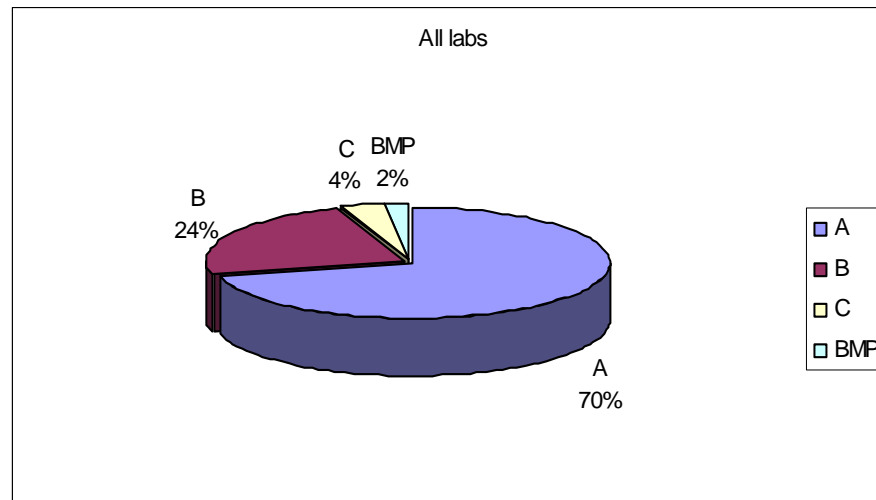


- N° applicants: 56 labs
- Results from: 55 labs
- Accredited: 46
- Volunteer: 9

1st PROFICIENCY TEST ON FLOWER SPECIES:

Results: all

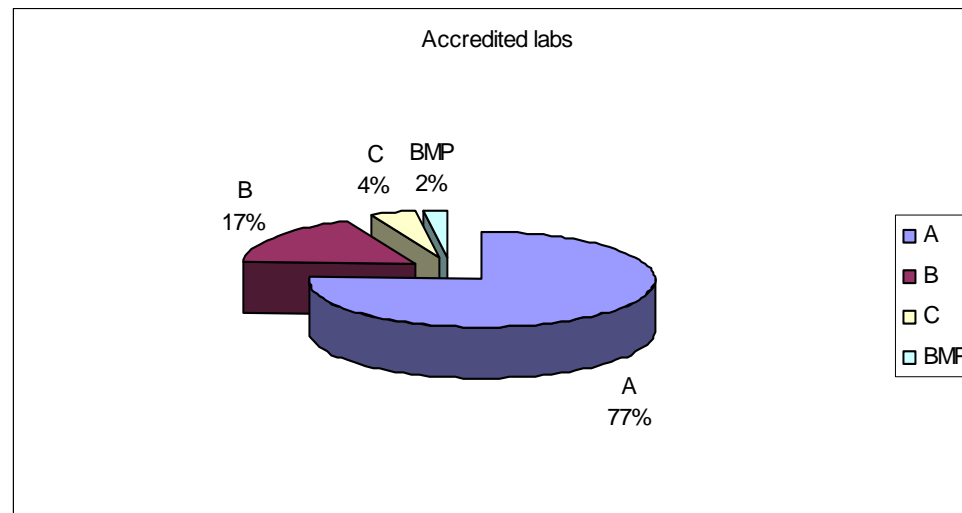
Rating	N° Lab	%
A	39	70
B	13	24
C	2	4
BMP	1	2
Tot	55	100



1st PROFICIENCY TEST ON FLOWER SPECIES:

Results: accredited

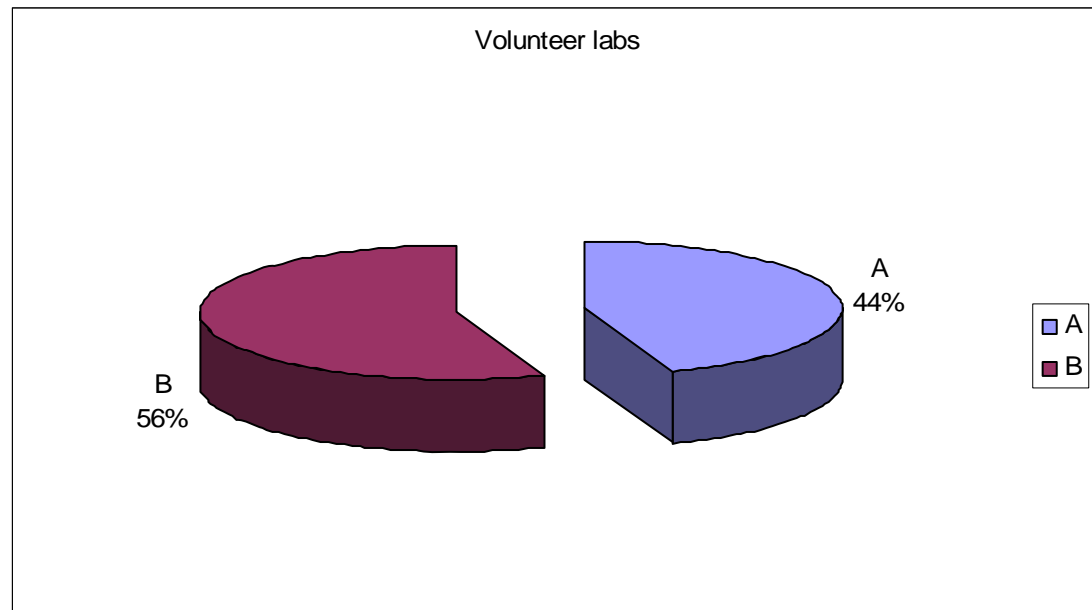
Rating	N° Lab	%
A	35	77
B	8	17
C	2	4
BMP	1	2
Tot	46	100



1st PROFICIENCY TEST ON FLOWER SPECIES:

Results: volunteer

Rating	N° Lab	%
A	4	44
B	5	56
C	0	0
BMP	0	0
Tot	9	100



1st PROFICIENCY TEST ON FLOWER SPECIES:

Results:

comparison with Germination PTs on different species

*PT rounds 02/3 to 05/2
(accredited labs)*

Rating	%
A	72/83
B	11/22
C	1/5
BMP	1/8

*PT round 05/1 - Zinnia
(accredited labs)*

Rating	%
A	77
B	17
C	4
BMP	2

1st PROFICIENCY TEST ON FLOWER SPECIES:

Results:

comparison with Germination PTs on different species

*PT rounds 02/3 to 05/2
(all labs)*

Rating	%
A	65/79
B	11/24
C	2/10
BMP	2/10

*PT round 05/1 - Zinnia
(all labs)*

Rating	%
A	70
B	24
C	4
BMP	2



THANK YOU!

ACTIVITY OF FSC MEMBERS IN 2004-2005

Year		2004	2005	2006
Member		HB 6	HB 5	W S
EUROPE	S.D.	x x	x x	
	R.Z.	x	x x	x x x
	P.R.		x x	
	M.M.			
	L.M.			
	G y.I.	x x	x x	
ASIA	L.M.			
	D r A.	x x		
	W.W.	x x	x x	
A FR.	F.M.	x x		
AMERICA	A.M.	x		
	S h.D.	x	x x	
	M.M.			
	D.T.			
	D.J.			
A U S.	M.T.		-	-

REQUEST LIST

The Committee has been involved in technical questions raised by ISTA Members and non-members:

- Germination method for *Gentiana lutea* and *Mentha spicata*
- Validation study for 6 species: *Primula veris*, *Chenopodium album*, *Vicia cracca*, *Leucanthemum vulgare*, *Hypochaeris radicata* and *Achillea millefolium*

FUTURE

Continue Handbook with work sheets of:

*Begonia, Delphinium, Dimorphoteca, Limonium,
Matthiola, Pelargonium, Primula*

Workshop in May 2007 May

Multilingual glossary of plant names Table 2 Part 3

